

(19) World Intellectual Property Organization
International Bureau



(43) International Publication Date
24 October 2002 (24.10.2002)

PCT

(10) International Publication Number
WO 02/083888 A2

(51) International Patent Classification⁷: C12N 15/00

(21) International Application Number: PCT/EP02/04322

(22) International Filing Date: 18 April 2002 (18.04.2002)

(25) Filing Language: English

(26) Publication Language: English

(30) Priority Data:
01201407.2 18 April 2001 (18.04.2001) EP

(71) Applicant (for all designated States except US):
**VLAAMS INTERUNIVERSITAIR INSTITUUT
VOOR BIOTECHNOLOGIE VZW** [BE/BE]; Rijnvis-
schestraat 120, B-9052 Zwijnaarde (BE).

(72) Inventors; and

(75) Inventors/Applicants (for US only): **GOOSSENS, Alain**
[BE/BE]; Markt 36, B-9160 Lokeren (BE). **INZÉ, Dirk**
[BE/BE]; Gustaaf Driesstraat 18, B-9310 Moorsel - Aalst
(BE).

(74) Common Representative: **VLAAMS INTERUNIVER-
SITAIR INSTITUUT VOOR BIOTECHNOLOGIE
VZW**; Rijnvischestraat 120, B-9052 Zwijnaarde (BE).

(81) Designated States (*national*): AE, AG, AL, AM, AT, AU, AZ, BA, BB, BG, BR, BY, BZ, CA, CH, CN, CO, CR, CU, CZ, DE, DK, DM, DZ, EC, EE, ES, FI, GB, GD, GE, GH, GM, HR, HU, ID, IL, IN, IS, JP, KE, KG, KP, KR, KZ, LC, LK, LR, LS, LT, LU, LV, MA, MD, MG, MK, MN, MW, MX, MZ, NO, NZ, OM, PH, PL, PT, RO, RU, SD, SE, SG, SI, SK, SL, TJ, TM, TN, TR, TT, TZ, UA, UG, US, UZ, VN, YU, ZA, ZM, ZW.

(84) Designated States (*regional*): ARIPO patent (GH, GM, KE, LS, MW, MZ, SD, SL, SZ, TZ, UG, ZM, ZW), Eurasian patent (AM, AZ, BY, KG, KZ, MD, RU, TJ, TM), European patent (AT, BE, CH, CY, DE, DK, ES, FI, FR, GB, GR, IE, IT, LU, MC, NL, PT, SE, TR), OAPI patent (BF, BJ, CF, CG, CI, CM, GA, GN, GQ, GW, ML, MR, NE, SN, TD, TG).

Published:

— without international search report and to be republished upon receipt of that report

For two-letter codes and other abbreviations, refer to the "Guidance Notes on Codes and Abbreviations" appearing at the beginning of each regular issue of the PCT Gazette.



WO 02/083888 A2

(54) Title: THE USE OF GENES ENCODING MEMBRANE TRANSPORTER PUMPS TO STIMULATE THE PRODUCTION OF SECONDARY METABOLITES IN BIOLOGICAL CELLS

(57) Abstract: The current invention relates to the field of secondary metabolite production in plants and plant cell cultures. More specifically, the invention relates to the use of transporters and more particularly ABC-transporters to enhance the production and/or secretion of secondary metabolites in plants and plant cell cultures.

The use of genes encoding membrane transporter pumps to stimulate the production of secondary metabolites in biological cells

Field of the invention

5 The current invention relates to the field of secondary metabolite production in plants and plant cell cultures. More specifically, the invention relates to the use of transporters and more particularly ABC-transporters to enhance the production and/or secretion of secondary metabolites in plants and plant cell cultures.

Introduction to the invention

10 Higher plants are able to produce a large number of small-molecular-weight compounds with very complex structures. These compounds, called secondary metabolites, play for example a role in the resistance against pests and diseases, attraction of pollinators and interaction with symbiotic microorganisms. Besides the
15 importance for the plant itself, secondary metabolites are of great interest because they determine the quality of food (colour, taste, aroma) and ornamental plants (flower colour, smell). A number of secondary metabolites isolated from plants are commercially available as fine chemicals, for example, drugs, dyes, flavours, fragrances and even pesticides. In addition, various health improving effects and
20 disease preventing activities of secondary metabolites have been discovered, such as anti-oxidative and anti-metastatic-lowering properties (e.g. vinblastine, taxol). Although about 100.000 plant secondary metabolites are already known, only a small percentage of all plants have been studied to some extent for the presence of secondary metabolites. It is expected that interest in such metabolites will continue to
25 grow as e.g. plant sources of new and useful drugs are discovered. Some of these valuable phytochemicals are quite expensive because they are only produced at extremely low levels in plants. Very little is known about the biosynthesis of secondary metabolites in plants. However, some recently elucidated biosynthetic pathways of secondary metabolites are long and complicated requiring multiple enzymatic steps to
30 produce the desired end product. Most often, the alternative of producing these secondary metabolites through chemical synthesis is complicated due to a large number of asymmetric carbons and in most cases chemical synthesis is not economically feasible.

The recovery of valuable secondary metabolites is mostly achieved through extraction and purification (generally at low yields) of imported, sometimes exotic, plant biomasses, whose reproductive agriculture and secure long term supply are often very difficult, if not impossible to guarantee. The problems of obtaining useful metabolites from natural sources may potentially be circumvented by cell culture. The culture of plant cells has been explored since the 1960's as a viable alternative for the production of complex phytochemicals of industrial interest. Although plant cell cultures might be somewhat sensitive for shear forces, many cultures can be grown in large bioreactors without difficulty. For example, the use of large-scale plant cell cultures in bioreactors for the production of alkaloids has been extensively studied (Verpoorte et al. (1999) *Biotechnol. Lett.* 21, 467). Since it has been observed that undifferentiated cultures such as callus and cell suspension cultures produce only very low levels of secondary metabolites one tends to use differentiated plant cell cultures such as root- and hairy root-culture. For example, tropane alkaloids that are only scarcely synthesized in undifferentiated cells are produced at relatively high levels in cultured roots. Despite the promising features and developments, the production of plant-derived pharmaceuticals by plant cell cultures has not been fully commercially exploited. The main reasons for this reluctance shown by industry to produce secondary metabolites by means of cell cultures, compared to the conventional extraction of whole plant material, are economical ones based on the slow growth and the low production levels of secondary metabolites by such plant cell cultures. Important causes are the toxicity of such compounds to the plant cell, and the role of catabolism of the secondary metabolites. Another important problem is that secondary metabolites are mostly retained intracellularly complicating the downstream processing and purification. Indeed, often laborious extraction schemes have to be developed for each specific secondary metabolite of interest.

It is an objective of the current invention to provide a solution to these problems. The invention aims primarily at using genes encoding ABC-transporters to enhance the production of secondary metabolites in plant cell cultures. ABC-transporters are well known in the field of cancer therapy as molecular 'pumps' in tumour-cell membranes that actively expel chemotherapy drugs from the interior of the cells. This allows tumour cells to avoid the toxic effects of the drug or molecular processes within the nucleus or the cytoplasm. The two pumps commonly found to confer chemoresistance in cancer are P-glycoprotein and the so-called multidrug resistance-associated protein

(MRP). In addition, ABC-transporters have been used in plants as a selection marker (WO 99/10514) and for the protection of plants for the detrimental effects of certain exogenously added xenobiotics (WO 00/18886, Muhitch J.M. et al. (2000) *Plant Science*, 157, 201). In US patent 6,166,290 it is shown that the use of ABC-transporters in plants can be used to stimulate remediation, to strengthen the disease response and to modulate plant pigmentation. It has however never been shown in the art that ABC-transporters can be used to enhance the level of secondary metabolites made in plant cell cultures neither has it been shown that ABC-transporters can be used to stimulate the secretion of endogenously synthesized secondary metabolites from the inside of plant cells to the extracellular space.

Legends of Figures

Fig. 1: Plasmid map of the pK7WGD2 binary vector.

15

Fig. 2: Hyoscyamine-induced cell death in transformed BY-2 cells.

Three-day old transformed BY-2 cell cultures were incubated in the absence (CON) or presence (HYO) of 30 mM hyoscyamin for 24 hours. Cell death was assayed at two timepoints (6 hours and 24 hours) by Evans blue staining and is indicated as the fold increase in optical density at OD₆₀₀ relative to the value at the start of the experiment. Values are the mean of three independent experiments. GUS, US50, W303 and AT represent BY-2 cell lines transformed with pK7WGD2-GUS, pK7WGD2-ScPDR5-US50, pK7WGD2-ScPDR5-W303 and pK7WGD2-AtPDR1 respectively.

Fig. 3 : *HmPDR1* expression is induced by CdCl₂.

Quantitative RT-PCR analysis of *HmPDR1* in total RNA from *H. muticus* hairy roots treated with 1mM CdCl₂ or H₂O as a control. Ethidium bromide-stained rRNA is used as a control. The fold increase in the ratio of *HmPDR1* transcript to rRNA fluorescence, relative to the value at timepoint zero, is given below the panels. Time after elicitation is indicated in hours.

Aims and detailed description of the invention

The human species has always been interested in plant secondary metabolites for flavourings for food, perfumes, pigments for artwork and clothing, and tools to achieve

spiritual enlightenment. Furthermore, plant derived drugs are among the oldest drugs in medicine. Many plants belonging to, for example, the *Solanaceae* family have been used for centuries because of their active substances: hyoscyamine and scopolamine. Also other *Solanaceae* plants belonging to the genera *Atropa*, *Datura*, *Duboisia* and *Scopolia* produce these valuable alkaloids. In medicine they find important applications in ophthalmology, anaesthesia, and in the treatment of cardiac and gastrointestinal diseases. In addition to their peripheral anticholinergic effects they also act on the central nervous system and are used to relieve the symptoms of Parkinson's disease, and as antidotes for the anticholinesterases such as organophosphates. Cocaine, which has strong stimulant effects on the central nervous system and is used as a topical anaesthetic, is also a tropane alkaloid but is found outside *Solanaceae* in *Erythroxylum coca*. Although a lot of information is available on the pharmacological effects of tropane alkaloids, surprisingly little is known about how the plants synthesize these substances and almost nothing is known about how this synthesis is regulated. Progress in the elucidation of the biosynthetic pathways of plant secondary products has long been hampered by lack of good model systems. In the past two decades plant cell cultures have proven to be invaluable tools in the investigation of plant secondary metabolite biosynthetic pathways. Plant cell and tissue cultures have also been widely used in order to obtain alternative production systems of tropane alkaloids as described above. The main problem has usually been a lack of a sufficient amount of alkaloids and/or instability of the production. Many cultures have shown a decrease in productivity with time. Current approaches to resolve some of the above described problems comprise: (1) the optimisation of the growth conditions of plant cell cultures (US 6,069,009), (2) the metabolic engineering of secondary metabolism by overexpression of regulatory genes (e.g. transcription factors) that induce the pathway (WO 00/46383) and (3) the stimulation of secondary metabolism by the use of elicitors (US 5,552,307). In the present invention we have identified an important bottleneck for the production of secondary metabolites in plants and plant cell cultures. We have found that production of secondary metabolites in plants and plant cell cultures can be enhanced by the transformation of a gene encoding a transporter to the plants or plant cells producing the desired secondary metabolite. Sometimes the slow growth of plant cells producing secondary metabolites is due to the toxicity of the metabolites which are produced inside the plant cells. We have shown that the toxicity can to a large extent be reduced by the transformation of a gene encoding a transporter to the plant

cells producing the desired secondary metabolite. Consequently, due to the reduction of the toxicity there is a higher growth rate of the transformed plant cell culture.

The present invention accordingly provides in one embodiment a method for inducing or enhancing the production or the secretion of at least one secondary metabolite in biological cells by transformation of said biological cells with an expression vector comprising an expression cassette that further comprises a gene coding for a transporter. With "at least one secondary metabolite" it is meant related structures of secondary metabolites and intermediates or precursors thereof. Said biological cells can be plant cells, fungal cells, bacteria cells, algae cells and/or animal cells. A "transporter" is a protein capable of interacting with at least one specific secondary metabolite and transporting said metabolite across a membrane wherein said membrane comprises the vacuolar membrane (tonoplast), or chloroplast membrane or plasmamembrane. Said transporter gene can be heterologous or homologous to the biological cell.

"Expression cassettes", of the present invention are generally DNA constructs preferably including (5' to 3' in the direction of transcription): a promoter region, a gene encoding for a transporter operatively linked with the transcription initiation region, and a termination sequence including a stop signal for RNA polymerase and a polyadenylation signal. It is understood that all of these regions should be capable of operating in the biological cells to be transformed. The promoter region comprising the transcription initiation region, which preferably includes the RNA polymerase binding site, and the polyadenylation signal may be native to the biological cell to be transformed or may be derived from an alternative source, where the region is functional in the biological cell.

The transporters of this invention may be expressed in for example a plant cell under the control of a promoter that directs constitutive expression or regulated expression. Regulated expression comprises temporally or spatially regulated expression and any other form of inducible or repressible expression. Temporally means that the expression is induced at a certain time point, for instance, when a certain growth rate of the plant cell culture is obtained (e.g. the promoter is induced only in the stationary phase or at a certain stage of development). Spatially means that the promoter is only active in specific organs, tissues, or cells (e.g. only in roots, leaves, epidermis, guard cells or the like. Other examples of regulated expression comprise promoters whose activity is induced or repressed by adding chemical or physical stimuli to the plant cell.

In a preferred embodiment the expression of the transporters is under control of environmental, hormonal, chemical, and/or developmental signals, also can be used for expression of transporters in plant cells, including promoters regulated by (1) heat, (2) light, (3) hormones, such as abscisic acid and methyl jasmonate (4) wounding or (5) chemicals such as salicylic acid, chitosans or metals. Indeed, it is well known that the expression of secondary metabolites can be boosted by the addition of for example specific chemicals, jasmonate and elicitors. The co-expression of transporters, in combination with a stimulation of secondary metabolite synthesis is beneficial for an optimal and enhanced production of secondary metabolites. Alternatively, the transporters can be placed under the control of a constitutive promoter. A constitutive promoter directs expression in a wide range of cells under a wide range of conditions. Examples of constitutive plant promoters useful for expressing heterologous polypeptides in plant cells include, but are not limited to, the cauliflower mosaic virus (CaMV) 35S promoter, which confers constitutive, high-level expression in most plant tissues including monocots; the nopaline synthase promoter and the octopine synthase promoter.

The expression cassette is usually provided in a DNA or RNA construct which is typically called an "expression vector" which is any genetic element, e.g., a plasmid, a chromosome, a virus, behaving either as an autonomous unit of polynucleotide replication within a cell (i.e. capable of replication under its own control) or being rendered capable of replication by insertion into a host cell chromosome, having attached to it another polynucleotide segment, so as to bring about the replication and/or expression of the attached segment. Suitable vectors include, but are not limited to, plasmids, bacteriophages, cosmids, plant viruses and artificial chromosomes. The expression cassette may be provided in a DNA construct which also has at least one replication system. In addition to the replication system, there will frequently be at least one marker present, which may be useful in one or more hosts, or different markers for individual hosts. The markers may a) code for protection against a biocide, such as antibiotics, toxins, heavy metals, certain sugars or the like; b) provide complementation, by imparting prototrophy to an auxotrophic host; or c) provide a visible phenotype through the production of a novel compound in the plant. Exemplary genes which may be employed include neomycin phosphotransferase (NPTII), hygromycin phosphotransferase (HPT), chloramphenicol acetyltransferase (CAT), nitrilase, and the gentamicin resistance gene. For plant host selection, non-

limiting examples of suitable markers are β -glucuronidase, providing indigo production, luciferase, providing visible light production, Green Fluorescent Protein and variants thereof, NPTII, providing kanamycin resistance or G418 resistance, HPT, providing hygromycin resistance, and the mutated *aroA* gene, providing glyphosate resistance.

5 The term "promoter activity" refers to the extent of transcription of a gene that is operably linked to the promoter whose promoter activity is being measured. The promoter activity may be measured directly by measuring the amount of RNA transcript produced, for example by Northern blot or indirectly by measuring the product coded for by the RNA transcript, such as when a reporter gene is linked to the promoter. The term "operably linked" refers to linkage of a DNA segment to another DNA segment in such a way as to allow the segments to function in their intended manners. A DNA sequence encoding a gene product is operably linked to a regulatory sequence when it is ligated to the regulatory sequence, such as, for example a promoter, in a manner which allows modulation of transcription of the DNA sequence, directly or indirectly. For example, a DNA sequence is operably linked to a promoter 15 when it is ligated to the promoter downstream with respect to the transcription initiation site of the promoter and allows transcription elongation to proceed through the DNA sequence. A DNA for a signal sequence is operably linked to DNA coding for a polypeptide if it is expressed as a pre-protein that participates in the transport of the polypeptide. Linkage of DNA sequences to regulatory sequences is typically accomplished by ligation at suitable restriction sites or adapters or linkers inserted in lieu thereof using restriction endonucleases known to one of skill in the art.

The term "heterologous DNA" or "heterologous RNA" refers to DNA or RNA that does not occur naturally as part of the genome or DNA or RNA sequence in which it is present, or that is found in a cell or location in the genome or DNA or RNA sequence that differs from that which is found in nature. Heterologous DNA and RNA (in contrast to homologous DNA and RNA) are not endogenous to the cell into which it is introduced, but has been obtained from another cell or synthetically or recombinantly produced. An example is a human gene, encoding a human protein, operably linked to a non-human promoter. Another example is a gene isolated from one plant species operably linked to a promoter isolated from another plant species. Generally, though not necessarily, such DNA encodes RNA and proteins that are not normally produced by the cell in which the DNA is transcribed or expressed. Similarly exogenous RNA encodes for proteins not normally expressed in the cell in which the exogenous RNA is 30

present. Heterologous DNA or RNA may also refer to as foreign DNA or RNA. Any DNA or RNA that one of skill in the art would recognize as heterologous or foreign to the cell in which it is expressed is herein encompassed by the term heterologous DNA or heterologous RNA. Examples of heterologous DNA include, but are not limited to, DNA that encodes proteins, polypeptides, receptors, reporter genes, transcriptional and translational regulatory sequences, selectable or traceable marker proteins, such as a protein that confers drug resistance, RNA including mRNA and antisense RNA and ribozymes.

Generally, two basic types of metabolites are synthesised in cells, i.e. those referred to as primary metabolites and those referred to as secondary metabolites. A primary metabolite is any intermediate in, or product of the primary metabolism in cells. The primary metabolism in cells is the sum of metabolic activities that are common to most, if not all, living cells and are necessary for basal growth and maintenance of the cells. Primary metabolism thus includes pathways for generally modifying and synthesising certain carbohydrates, proteins, fats and nucleic acids, with the compounds involved in the pathways being designated primary metabolites. In contrast hereto, secondary metabolites usually do not appear to participate directly in growth and development. They are a group of chemically very diverse products that often have a restricted taxonomic distribution. Secondary metabolites normally exist as members of closely related chemical families, usually of a molecular weight of less than 1500 Dalton, although some bacterial toxins are considerably longer. Secondary plant metabolites include e.g. alkaloid compounds (e.g. terpenoid indole alkaloids, tropane alkaloids, steroid alkaloids, polyhydroxy alkaloids), phenolic compounds (e.g. quinines, lignans and flavonoids), terpenoid compounds (e.g. monoterpenoids, iridoids, sesquiterpenoids, diterpenoids and triterpenoids). In addition, secondary metabolites include small molecules (i.e. having a molecular weight of less than 600), such as substituted heterocyclic compounds which may be monocyclic or polycyclic, fused or bridged. Many plant secondary metabolites have value as pharmaceuticals. Plant pharmaceuticals include e.g. taxol, digoxin, colchicines, codeine, morphine, quinine, shikonin, ajmalicine and vinblastine. The definition of "Alkaloids", of which more than 12.000 structures have been described already, includes all nitrogen-containing natural products which are not otherwise classified as peptides, non-protein amino acids, amines, cyanogenic glycosides, glucosinolates, cofactors, phytohormones or primary metabolites (such as purine and pyrimidine bases). The "calystegins" constitute a

unique subgroup of the tropane alkaloid class (Goldmann et al. (1990) *Phytochemistry*, 29, 2125). They are characterized by the absence of an N-methyl substituent and a high degree of hydroxylation. Trihydroxylated calystegins are summarized as the calystegin A-group, tetrahydroxylated calystegins as the B-group, and pentahydroxylated derivatives form the C-group. Calystegins represent a novel structural class of polyhydroxy alkaloids possessing potent glycosidase inhibitory properties next to longer known classes of the monocyclic pyrrolidones (e.g. dihydroxymethyl-dihydroxy pyrrolidine) pyrrolines and piperidines (e.g. deoxynojirimycin), and the bicyclic pyrrolizidines (e.g. australine) and indolizidines (e.g. swainsonine and castanospermine). Glycosidase inhibitors are potentially useful as antidiabetic, antiviral, antimetastatic, and immunomodulatory agents.

In another embodiment the invention provides a method for enhancing the production of at least one secondary metabolite in biological cells by transformation of said biological cells with an expression vector comprising an expression cassette further comprising a gene coding for an ABC transporter. Genes useful to be incorporated in an expression cassette for carrying out the present invention include those coding for ATP-binding cassette (ABC) transporters. Genes encoding ABC-transporters can be of any species or origin, including microorganisms, plant and animal (Higgins (1992) *Ann. Rev. Cell Biol.* 8, 67), but are preferably of plant or fungal origin. The ATP-binding cassette (ABC) transporters, also called the "traffic ATPases", comprise a superfamily of membrane proteins that mediate transport and channel functions in prokaryotes and eukaryotes (Higgins, C. F. (1992) *Annu. Rev. Cell Biol.* 8:67-113; Theodoulou F. (2000) *Biochimica et Biophysica Acta* 1465, 79). Typically, an ABC transporter contains two copies each of two structural units: a highly hydrophobic transmembrane domain (TMD), and a peripherally located ATP binding domain or nucleotide binding fold (NBF), which together are often necessary and sufficient to mediate transport. The TMD domains form the pathway via which the substrate crosses the membrane, and in some cases, have been shown to contribute to the substrate specificity. The NBFs are oriented towards the cytoplasmic side of the membrane and couple ATP hydrolysis to transport. Within the NBF is a conserved region of approximately 200 amino acids, consisting of the Walker A and B boxes separated by the ABC signature motif. It is this signature motif which distinguishes ABC transporters from other NTP binding proteins, such as the kinases, which also contain the Walker sequences. Sequence homology

over the whole gene can be negligible between different ABC transporters, but in the conserved areas of the NBF it is typically 30-40% between family members, and this has proved useful in the isolation of ABC genes by approaches such as PCR and hybridisation with degenerate nucleotides (Dudler R. et al (1998) Methods Enzymol. 292, 162). A great variety of specific substrates is transported by members of this family of transport proteins, including drugs, anorganic ions, amino acids, proteins, sugars, and polysaccharides. Eukaryotic ABC proteins include: P-glycoproteins, also known as multidrug resistance (MDR) proteins, which are associated with resistance to a wide range of hydrophobic drugs (MDR1; Gottesman, M. M. & Pastan, I. (1993) Annu. Rev. Biochem. 62:385-427) or with phosphatidylcholine transport (MDR2; Ruetz, S. & Gros, P. (1994) Cell 77:1071-1081); CFTR, the cystic fibrosis transmembrane conductance regulator (Welsh, M. J. & Smith, A. E. (1993) Cell 73:1251-1254); TAP proteins, the transporters associated with antigen processing in mammalian cells (Androlewicz, M. J. et al. (1994) Proc. Natl. Acad. Sci. USA 91:12716-12720); cMOAT/cMRP1, which is associated with transport of glutathione, glucuronide, and sulfate conjugates across the canalicular membrane (Buchler, M. et al. (1996) J. Biol. Chem. 271:15091-15098); and STE6, which exports the α -factor mating pheromone of *S. cerevisiae* (Michaelis, S. (1993) Semin. Cell Biol. 4:17-27) and PDR5, the pleiotropic drug resistance protein of yeast. Prokaryotic ABC proteins include periplasmic nutrient permeases, such as those responsible for uptake of maltose (MalFGK) and histidine (HisMPQ) in gram-negative bacteria, and toxin exporters such as those required for export of hemolysin (HlyB) and colicin (ColV) from *E. coli*. Sequence comparisons between MRP1 and other ABC transporters reveal two major subgroups among these proteins (Szczycka et al. (1994) J. Biol. Chem. 269, 22853). One subgroup comprises MRP1, the *Saccharomyces cerevisiae* cadmium factor (YCF1) gene, the *Leishmania* P-glycoprotein-related molecule (Lei/PgpA) and the CFTRs. The other subgroup comprises the multiple drug resistance proteins (MDRs), MHC transporters and STE6. Homologues of ABC-transporters have been identified in plant species. In *Arabidopsis thaliana*, the glutathione-conjugate transporter (MRP) is located in the vacuolar membrane and is responsible for sequestration of xenobiotics in the central vacuole. An MDR-like gene (atpgp1) has also been identified in *A. thaliana*, which encodes a putative P-glycoprotein homolog. This atpgp1 gene was found to share significant sequence homology and structural organization with human MDR genes. Other MDR homologues have been found in potato and barley. Genes encoding ABC-transporters

of the present invention which may be operably linked with a promoter for expression in a plant species may be derived from a chromosomal gene, cDNA, a synthetic gene, or combinations thereof.

In another embodiment of the invention DNA sequences encoding ABC-transporters are used to enhance the production of at least one secondary metabolite in plant cells comprising the transformation of said plant cells with an expression vector comprising an expression cassette further comprising a gene coding for an ABC-transporter.

By the term "enhanced production" it is meant that the level of one or more metabolites may be enhanced by at least 20%, 30%, 40%, 50%, 60%, 70%, 80%, 90% or at least 100% relative to the untransformed plant cell which was used to transform with an expression vector comprising an expression cassette further comprising a gene coding for a transporter or an ABC-transporter. An enhanced production of a secondary metabolite can result in a detection of a higher level of secondary metabolites in the extracellular medium of the plant cell culture. Alternatively, a higher level of secondary metabolites can be detected inside the plant cells, for example in the vacuole.

The present invention can be practiced with any plant variety for which cells of the plant can be transformed with an expression cassette of the current invention and for which transformed cells can be cultured *in vitro*. Suspension culture, callus culture, hairy root culture, shoot culture or other conventional plant cell culture methods may be used (as described in: Drugs of Natural Origin, G. Samuelsson, 1999, ISBN 9186274813).

By "plant cells" it is understood any cell which is derived from a plant and can be subsequently propagated as callus, plant cells in suspension, organized tissue and organs (e.g. hairy roots).

Tissue cultures derived from the plant tissue of interest can be established. Methods for establishing and maintaining plant tissue cultures are well known in the art (see, e.g. Trigiano R.N. and Gray D.J. (1999), "Plant Tissue Culture Concepts and Laboratory Exercises", ISBN: 0-8493-2029-1; Herman E.B. (2000), "Regeneration and Micropropagation: Techniques, Systems and Media 1997-1999", Agricell Report).

Typically, the plant material is surface-sterilized prior to introducing it to the culture medium. Any conventional sterilization technique, such as chlorinated bleach treatment can be used. In addition, antimicrobial agents may be included in the growth medium. Under appropriate conditions plant tissue cells form callus tissue, which may

be grown either as solid tissue on solidified medium or as a cell suspension in a liquid medium.

A number of suitable culture media for callus induction and subsequent growth on aqueous or solidified media are known. Exemplary media include standard growth media, many of which are commercially available (e.g., Sigma Chemical Co., St. Louis, Mo.). Examples include Schenk-Hildebrandt (SH) medium, Linsmaier-Skoog (LS) medium, Murashige and Skoog (MS) medium, Gamborg's B5 medium, Nitsch & Nitsch medium, White's medium, and other variations and supplements well known to those of skill in the art (see, e.g., *Plant Cell Culture*, Dixon, ed. IRL Press, Ltd. Oxford (1985) and George et al., *Plant Culture Media*, Vol 1, Formulations and Uses Exegetics Ltd. Wilts, UK, (1987)). For the growth of conifer cells, particularly suitable media include 1/2 MS, 1/2 L.P., DCR, Woody Plant Medium (WPM), Gamborg's B5 and its modifications, DV (Durzan and Ventimiglia, *In Vitro Cell Dev. Biol.* 30:219-227 (1994)), SH, and White's medium.

When secondary metabolites are produced in plant cell culture systems they usually have to be extracted and purified from the isolated plant cell mass which is an expensive process. It is known that plants can be made by means of genetic manipulation to store proteins in seed endosperm, from where they can be more easily extracted. It has also been described that some plant cells can secrete secondary metabolites can be secreted and that said secretion can be enhanced by for example the addition of elicitors (Kneer et al. (1999) *J. Exp. Bot.* 50, 1553) or by the addition of specific chemicals (Lee et al. (1998) *Phytochemistry* 49, 2342). It has however never been described that the secretion of secondary metabolites by plant cells can be induced or enhanced by the transformation of at least one specific gene into a plant cell. The present invention provides a solution for this problem by transformation of plant cells, producing secondary metabolites, with an expression cassette comprising a gene encoding an ABC-transporter. Therefore, in another embodiment of the invention a DNA sequence encoding an ABC-transporter can be used to induce or enhance the secretion of at least one secondary metabolite produced in plant cell cultures comprising transforming said plant cells that are producing secondary metabolites, with an expression vector comprising an expression cassette further comprising a gene coding for an ABC-transporter, and selecting transformed plant cells with an induced or enhanced secretion of at least one secondary metabolite. Such transformed plant cells can be subsequently propagated using methods described herein before.

An "enhanced secretion of at least one secondary metabolite" means that there exists already a detectable secretion of the secondary metabolite(s) in the extracellular medium of the plant cell culture and that an increase of the secondary metabolite(s) can be measured by at least 20%, 30%, 40%, 50%, 60%, 70%, 80%, 90% or more than 90% compared to basal secretion by the untransformed plant cell culture. An 'enhanced secretion' does not necessarily mean that there is a higher production, it can also mean that there is exists the same level of production but that the secretion is enhanced. An "induced secretion of at least one secondary metabolite" means that there is no detectable secretion of the secondary metabolite(s) in the extracellular medium of the untransformed plant cell culture but that the detection becomes possible upon carrying out the transformation according to the invention.

Generally secondary metabolites can be measured, intracellularly or in the extracellular space, by methods known in the art. Such methods comprise analysis by thin-layer chromatography, high pressure liquid chromatography, capillary chromatography, (gas chromatographic) mass spectrometric detection, radioimmuno-assay (RIA) and enzyme immuno-assay (ELISA).

In order to make clear what is meant by the word "secretion" in the current invention one has to make a clear distinction between the secretion of proteins which is mediated by an amino-terminal signal peptide and the secretion of secondary metabolites which is independent of an amino-terminal leader sequence. As the term is used herein, secretion means secretion of a secondary metabolite across the plasma membrane or secretion across both the plasma membrane and the cell wall of a plant cell. It should be noted that, in the scientific literature the term "secretion" often is used to indicate secretion into the apoplastic space, i.e., secretion across the plasma membrane but not across the cell wall.

In one aspect of the invention there is no secretion of (a) secondary metabolite(s) into the growth medium. Then, the secretion can be induced by several possibilities: (1) by the transformation of the plant cell with a heterologous gene encoding an ABC-transporter or (2) by the overexpression of a homologous ABC-transporter which expressing is rate-limiting in the plant cell or (3) by the relocalisation of a homologous or heterologous ABC-transporter from a vacuolar localisation towards a membrane localisation. In plants, proteins destined for the vacuole are sorted away from proteins destined for secretion at the trans-Golgi network, a process that requires the presence of positive sorting signals on the vacuolar proteins. Three types of sorting signals have

been described for soluble vacuolar proteins in plants (Matsuoka and Neuhaus (1999) J. Exp. Botany 50, 165). Some proteins contain a cleavable amino-terminal propeptide that functions as a sorting signal while others contain a cleavable carboxy-terminal propeptide. Finally, a minor amount of plant proteins contains an internal vacuolar targeting determinant. According to the invention a homologous or heterologous ABC-transporter that is normally localized in the vacuolar membrane can be engineered by clipping off its vacuolar localisation signal (carboxy-terminal or amino-terminal propeptide) or by deleting its internal vacuolar targeting determinant. If necessary a heterologous or homologous amino-terminal leader sequence is spliced to the gene encoding the homologous or heterologous ABC-transporter in order to provide entry into the secretion system. As a result said engineered ABC-transporter is not directed anymore in the secretion pathway towards its normal vacuolar localisation but is deviated towards the extracellular space. However, due to the hydrophobic transmembrane signal present in ABC-transporters, the ABC-transporter is not secreted into the extracellular medium but remains sequestered into the plasmamembrane of the plant cell. We show in the present invention that the novel intracellular localisation of the ABC-transporter (from the vacuole to the plasma membrane) results in a secretion of the produced secondary metabolites into the medium of the plant cell culture.

In another aspect of the invention there is already an existing but a low level of secretion of (a) secondary metabolite(s) by the plant cell and then the secretion can be enhanced by (1) by the transformation of the plant cell with a heterologous gene encoding an ABC-transporter or (2) by the overexpression of a homologous ABC-transporter which expressing is rate-limiting in the plant cell or (3) by the relocalisation of a homologous or heterologous ABC-transporter from a normal vacuolar localisation towards a membrane localisation.

In yet another aspect of the invention an intermediary product of the secondary metabolite, which causes negative feedback inhibition on an enzymatic reaction step involved in the biosynthesis of said secondary metabolite, can be secreted by (1) by the transformation of the plant cell with a heterologous gene encoding an ABC-transporter or (2) by the overexpression of a homologous ABC-transporter which expressing is rate-limiting in the plant cell or (3) by the relocalisation of a homologous or heterologous ABC-transporter from a vacuolar localisation towards a membrane localisation. The secretion of said intermediary product or an amount produced thereof

reduces the negative feedback inhibition and consequently enhances the production of the secondary metabolite in the plant cell. The enhanced production of said secondary metabolite can be made secreted by the plant cell by the transformation of the already transformed plant cell, with a second expression cassette comprising a gene encoding
5 an ABC transporter, according to the method described above. In this case of secretion, the directed secondary metabolites can be easily isolated from the surrounding medium since they are directed into the extracellular space. Consequently, the breaking up of the cells that is necessary in the case of intracellular production can be omitted.

10 In another embodiment of the invention the production of secondary metabolites can be enhanced by stimulating the transport of secondary metabolites into the vacuole. In plants, the targeting of proteins and compounds into the vacuole is of particular interest (especially from the point of view of application) because the vacuole is the largest storage compartment in the cell for reserve substances, detoxification products and
15 defence substances. The most important storage takes place in vacuoles in plant organs such as tubers, bulbs, roots and stems. Similar considerations also apply to substances that can be used in the control of pests or diseases, especially when those substances prove to be toxic to the plant itself. Indeed, in certain cases the vacuole also serves as a detoxification organel by, for example, storing the detoxification
20 products synthesised by the plant. According to the present invention secondary metabolites can also be made secreted into the vacuole (1) by the transformation of a plant cell with a heterologous gene encoding an ABC-transporter or (2) by the overexpression of a homologous ABC-transporter which expressing is rate-limiting in the plant cell or (3) by the relocalisation of a homologous or heterologous ABC-
25 transporter from a normally localised plasmamembrane localisation towards a vacuolar localisation. To perform said relocalisation it is necessary to modify the gene encoding an ABC-transporter by genetically fusing it to an amino-terminal or carboxy-terminal vacuolar localisation signal or by the genetic modification through the introduction of an existing internal vacuolar localisation signal. US patent 6,054,637 provides detailed
30 information of genetic modification of genes through the addition or clipping off plant vacuolar localisation signals. We observe that the secretion or targeting of the produced secondary metabolites into the vacuole reduces the toxicity to the plant cell. In yet another embodiment of the invention an intermediary product of the secondary metabolite, which causes negative feedback inhibition on an enzymatic reaction step

involved in the biosynthesis of said secondary metabolite, can be made sequestered into the vacuole by (1) the transformation of the plant cell with a heterologous gene encoding an ABC-transporter or by (2) the overexpression of a homologous ABC-transporter which expressing is rate-limiting in the plant cell or (3) by the relocalisation of a homologous or heterologous ABC-transporter from a normal membrane localisation towards a vacuolar localisation. The import of said intermediary product, or an amount produced thereof, into the vacuole reduces the negative feedback inhibition of the enzymatic reaction which occurs outside the vacuole and consequently enhances the production of the secondary metabolite in the plant cell.

In another embodiment the current invention can be combined with other known methods to enhance the production and/or the secretion of secondary metabolites in plant cell cultures such as (1) by improvement of the plant cell culture conditions, (2) by the transformation of the plant cells with a transcription factor capable of upregulating genes involved in the pathway of secondary metabolite formation, (3) by the addition of specific elicitors to the plant cell culture, and 4) by the induction of organogenesis.

In another embodiment of the invention DNA sequences encoding ABC-transporters are used to enhance the production of at least one secondary metabolite in plants comprising the transformation of said plants with an expression vector comprising an expression cassette further comprising a gene coding for an ABC-transporter.

By the term "to enhance the production" it is meant that the level of one or more metabolites may be enhanced by at least 20%, 30%, 40%, 50%, 60%, 70%, 80%, 90% or at least 100% relative to the untransformed plant which was used to transform with an expression vector comprising an expression cassette further comprising a gene coding for a transporter or an ABC-transporter. An enhanced production of a secondary metabolite can result in a detection of a higher level of secondary metabolites in the plant, for example in the vacuole. In another embodiment the enhanced production of at least one secondary metabolite leads to an enhanced secretion. In yet another embodiment the same production of at least one secondary metabolite occurs in the transformed plant but an enhanced secretion of at least one secondary metabolite occurs by said transformed plant. Secondary metabolites can for example be efficiently produced by continuous secretion from the roots of hydroponically grown plants. This process of secretion is also been termed 'rhizosecretion'.

The term "plant" as used herein refers to vascular plants (e.g. gymnosperms and angiosperms). The method comprises transforming a plant cell with an expression cassette of the present invention and regenerating such plant cell into a transgenic plant. Such plants can be propagated vegetatively or reproductively. The transforming step may be carried out by any suitable means, including by *Agrobacterium*-mediated transformation and non-*Agrobacterium*-mediated transformation, as discussed in detail below. Plants can be regenerated from the transformed cell (or cells) by techniques known to those skilled in the art. Where chimeric plants are produced by the process, plants in which all cells are transformed may be regenerated from chimeric plants having transformed germ cells, as is known in the art. Methods that can be used to transform plant cells or tissue with expression vectors of the present invention include both *Agrobacterium* and non-*Agrobacterium* vectors. *Agrobacterium*-mediated gene transfer exploits the natural ability of *Agrobacterium tumefaciens* to transfer DNA into plant chromosomes and is described in detail in Gheysen, G., Angenon, G. and Van Montagu, M. 1998. *Agrobacterium*-mediated plant transformation: a scientifically intriguing story with significant applications. In K. Lindsey (Ed.), Transgenic Plant Research. Harwood Academic Publishers, Amsterdam, pp. 1-33 and in Stafford, H.A. (2000) Botanical Review 66: 99-118. A second group of transformation methods is the non-*Agrobacterium* mediated transformation and these methods are known as direct gene transfer methods. An overview is brought by Barcelo, P. and Lazzeri, P.A. (1998) Direct gene transfer: chemical, electrical and physical methods. In K. Lindsey (Ed.), Transgenic Plant Research, Harwood Academic Publishers, Amsterdam, pp.35-55. Hairy root cultures can be obtained by transformation with virulent strains of *Agrobacterium rhizogenes*, and they can produce high contents of secondary metabolites characteristic to the mother plant. Protocols used for establishing of hairy root cultures vary, as well as the susceptibility of plant species to infection by *Agrobacterium* (Toivunen L. (1993) Biotechnol. Prog. 9, 12; Vanhala L. et al. (1995) Plant Cell Rep. 14, 236). It is known that the *Agrobacterium* strain used for transformation has a great influence on root morphology and the degree of secondary metabolite accumulation in hairy root cultures. It is possible that by systematic clone selection e.g. via protoplasts, to find high yielding, stable, and from single cell derived-hairy root clones. This is possible because the hairy root cultures possess a great somaclonal variation. Another possibility of transformation is the use of viral vectors (Turpen TH (1999) *Philos Trans R Soc Lond B Biol Sci* 354(1383): 665-73).

Any plant tissue or plant cells capable of subsequent clonal propagation, whether by organogenesis or embryogenesis, may be transformed with an expression vector of the present invention. The term 'organogenesis' means a process by which shoots and roots are developed sequentially from meristematic centers; the term
5 'embryogenesis' means a process by which shoots and roots develop together in a concerted fashion (not sequentially), whether from somatic cells or gametes. The particular tissue chosen will vary depending on the clonal propagation systems available for, and best suited to, the particular species being transformed. Exemplary tissue targets include protoplasts, leaf disks, pollen, embryos, cotyledons, hypocotyls,
10 megagametophytes, callus tissue, existing meristematic tissue (e.g. apical meristems, axillary buds, and root meristems), and induced meristem tissue (e.g., cotyledon meristem and hypocotyls meristem).

These plants may include, but not limited to, plants or plant cells of agronomically important crops, such as tomato, tobacco, diverse herbs such as oregano, basilicum
15 and mint. It may also be applied to plants that produce valuable compounds, e.g. useful as for instance pharmaceuticals, as ajmalicine, vinblastine, vincristine, ajmaline, reserpine, rescinnamine, camptothecine, ellipticine, quinine, and quinidien, taxol, morphine, scopolamine, atropine, cocaine, sanguinarine, codeine, genistein, daidzein, digoxin, colchicines, calystegins or as food additives such as anthocyanins, vanillin;
20 including but not limited to the classes of compounds mentioned above. Examples of such plants include, but not limited to, *Papaver spp.*, *Rauvolfia spp.*, *Taxus spp.*, *Cinchona spp.*, *Eschscholtzia californica*, *Camptotheca acuminata*, *Hyoscyamus spp.*, *Berberis spp.*, *Coptis spp.*, *Datura spp.*, *Atropa spp.*, *Thalictrum spp.*, *Peganum spp.*

25 In another embodiment the invention provides an isolated polypeptide selected from the groups consisting of (a) an isolated polypeptide encoded by a polynucleotide comprising the sequence of SEQ ID NO: 1; (b) an isolated polypeptide comprising a polypeptide sequence having a least 83 % identity to the polypeptide sequence of SEQ ID NO: 2; (c) fragments and variants of such polypeptides in (a) to (b) that induce or
30 enhance the production or the secretion of at least one secondary metabolite in plants or plant cells.

In another embodiment the invention provides an isolated polynucleotide selected from the groups consisting of (a) an isolated polynucleotide comprising a polynucleotide

sequence of SEQ ID NO: 1; (b) an isolated polynucleotide comprising a polynucleotide sequence having at least 91% identity to SEQ ID NO: 1; (c) fragments and variants of such polynucleotides in (a) to (b) that induce or enhance the production or the secretion of at least one secondary metabolite in plants or plant cells.

5 As used herein, the words "polynucleotide" may be interpreted to mean the DNA and cDNA sequence as detailed by Yoshikai et al. (1990) *Gene* 87:257, with or without a promoter DNA sequence as described by Salbaum et al. (1988) *EMBO J.* 7(9):2807.

As used herein, "fragment" refers to a polypeptide or polynucleotide of at least about 9 amino acids or 27 base pairs, typically 50 to 75, or more amino acids or base pairs, 10 wherein the polypeptide contains an amino acid core sequence. If desired, the fragment may be fused at either terminus to additional amino acids or base pairs, which may number from 1 to 20, typically 50 to 100, but up to 250 to 500 or more. A "functional fragment" means a polypeptide fragment possessing the biological property of that induce or enhance the production or the secretion of at least one secondary 15 metabolite in plants or plant cells. The terms 'identical' or percent 'identity' in the context of two or more nucleic acids or polypeptide sequences, refer to two or more sequences or subsequences that are the same or have a specified percentage of amino acid residues or nucleotides that are the same (i.e. 70% identity over a specified region), when compared and aligned for maximum correspondence over a comparison 20 window, or designated region as measured using sequence comparison algorithms or by manual alignment and visual inspection. Preferably, the identity exists over a region that is at least about 25 amino acids or nucleotides in length, or more preferably over a region that is 50-100 amino acids or nucleotides or even more in length. Examples of useful algorithms are PILEUP (Higgins & Sharp, *CABIOS* 5:151 (1989), BLAST and 25 BLAST 2.0 (Altschul et al. *J. Mol. Biol.* 215: 403 (1990)). Software for performing BLAST analyses is publicly available through the National Center for Biotechnology Information (<http://www.ncbi.nlm.nih.gov/>).

Examples

30 The recombinant DNA and molecular cloning techniques applied in the below examples are all standard methods well known in the art and are e.g. described by Sambrook et al. (1989) *Molecular cloning: A laboratory manual*, second edition, Cold Spring Harbor Laboratory Press. Methods for yeast culture and manipulation applied in the below examples are all standard methods well known in the art and are described

e.g. in Guthrie and Fink (1991) Guide to yeast genetics and molecular biology, academic Press, Inc., New York. Methods for tobacco cell culture and manipulation applied in the below examples are methods described in or derived from methods described in Nagata et al. (1992) Int. Rev. Cytol. 132, 1.

5

EXAMPLE 1: Identification of yeast multidrug resistance transporters specific for tropane (Tas) and nicotine-type alkaloids (NAs)

In the yeast *Saccharomyces cerevisiae*, a complex pleiotropic drug resistance (PDR) network of genes involved in multidrug resistance is composed of the transcriptional regulators Pdr1p and Pdr3p, which activate expression of the ATP-binding cassette (ABC) transporter-encoding genes *PDR5*, *SNQ2*, *YOR1*, as well as other not yet identified genes. To assess yeast sensitivity towards tropane alkaloids (Tas) and nicotine alkaloids (Nas) and identify yeast ABC transporters with specificity for TAs and NAs, we have screened isogenic yeast strains deleted of the ABC transporters *YOR1*, *SNQ2*, *PDR5*, *PDR10*, *PDR11* or *YCF1* for tolerance to the toxic compounds hyoscyamine, scopolamine and nicotine. The isogenic yeast strains derived from the US50-18C genotype were constructed and described in Decottignies et al. (*J. Biol. Chem.* (1998) 273, 12612). The yeast strains derived from the BY4741 genotype are obtained from the EUROSCARF collection (Frankfurt, Germany). All strains are listed in Table 1.

Table 1. Yeast strains used	
Strain	Genotype
US50-18C	<i>Mata pdr1-3 ura3 his1</i>
AD1	US50-18C <i>yor1::hisG</i>
AD2	US50-18C <i>snq2::hisG</i>
AD3	US50-18C <i>pdr5::hisG</i>
AD4	US50-18C <i>pdr10::hisG</i>
AD5	US50-18C <i>pdr11::hisG</i>
BY4741	<i>Mata his3Δ1 leu2Δ0 met15Δ0 ura3Δ0</i>
Y02409	BY4741 <i>pdr5::kanMX4</i>
Y03951	BY4741 <i>snq2::kanMX4</i>
Y04069	BY4741 <i>ycf1::kanMX4</i>
Y05933	BY4741 <i>yor1::kanMX4</i>

Alkaloid tolerance was assessed by controlling growth performance on rich medium (YPD) that contained different concentrations of TAs or NAs. To this end the different strains were grown to saturation (48h) in liquid YPD. Cultures were diluted 10-, 100- and 1000-fold, and volumes of about 3 μ l were dropped with a stainless steel replicator on YPD plates containing 2% Bacto Agar with the toxic compounds. Rich medium contains 1% yeast extract, 2% Bacto Peptone and 2% glucose. Filter-sterilized water solutions of hyoscyamine, scopolamine and nicotine were added after autoclaving. Growth was evaluated after two days incubation at 28°C. We observed that wild type yeast (i.e. not deleted for one of the ABC transporters) can tolerate hyoscyamine, scopolamine and nicotine to levels of 50 mM, 100 mM, and 15 mM respectively. Gradually increasing alkaloid levels in the medium caused growth retardation and was finally lethal. All isogenic strains except the *pdr5* mutant strain showed identical alkaloid sensitivity. The above-mentioned alkaloid concentrations were lethal for the strain deleted for the *PDR5* gene. This indicates that Pdr5p shows substrate specificity for TAs and NAs and is the only known ABC transporter involved in TA or NA transport in yeast cells. Previously other plant secondary metabolites such as indole alkaloids (e.g. vinblastine and vincristine), taxol and flavonoids were also shown to be substrates for Pdr5p mediated multidrug transport (Kolaczowski et al. (1996) J. Biol. Chem. 271, 31543 and Kolaczowski et al. (1998) Microb. Drug Resist. 4, 143).

EXAMPLE 2: Assessment of toxicity of TAs and NAs to tobacco BY-2 suspension cultured cells

Suspension cultured tobacco cells, *Nicotiana tabacum* L. cv Bright Yellow 2 were grown in the dark at 26°C on a rotary shaker (130 rpm) in MSST, a modified Murashige-Skoog basal medium supplemented with 1.5 mM KH_2PO_4 , 3 μ M thiamine, 0.55 mM inositol, 87 mM sucrose and 1 μ M 2,4D. Cells are subcultured every 7 days by transferring 0.5 ml into 50 ml of fresh medium in 250-ml flasks.

Toxicity of TAs and NAs to tobacco BY-2 cells was assessed in two ways. In the first method growth performance on MSST medium containing different concentrations of TAs or NAs was controlled. To this end a fresh BY-2 cell culture was started and after 3 days culture volumes of about 300 μ l were dropped on MSST plates containing 0.65% Bacto Agar and the toxic alkaloids. Filter-sterilised water solutions of hyoscyamine and nicotine were added after autoclaving. Growth was evaluated after

15 days incubation at 26°C. Wildtype BY-2 cells (i.e. not transgenic) can tolerate hyoscyamine and nicotine without severe growth problems to levels of 30 mM and 3 mM respectively. Gradually increasing alkaloid levels in the medium caused growth retardation and finally was lethal. In the second method toxicity was evaluated by measuring cell death after incubation in the presence of increasing levels of alkaloids. Cell death was scored by the Evans blue method (Turner and Novacky (1974) *Phytopathol.* 64, 885). To this end a fresh BY-2 cell culture was started and after 3 days 5 ml of this culture was transferred to one well of a 6-well plate (Falcon 353046). 1 ml of fresh MSST was added and the desired toxic compound in a volume of 650 μ l in 0.1M potassium phosphate buffer at pH 5.8. Cells were then further incubated on the rotary shaker and 1-ml samples were taken after 0, 6 and 24 hours. We spun the cells down at 6000 rpm for 3 minutes, removed the supernatant, added 1 ml of 0.1% Evans blue in MSST medium and incubated for 15 minutes at room temperature on a rotary wheel. Afterwards we spun the cells down again and washed 5 times with fresh MSST medium till all the blue color was gone from the supernatant. Dye bound to dead cells was solubilised by incubation in 1 ml of 50% methanol, 1% SDS for 30 minutes at 50°C. We spun the cells down again (now at 14000 rpm for three minutes) and quantified cell death by measuring OD₆₀₀ of the supernatant. Cell death is expressed as fold increase in Evans blue staining compared to the control cells. In this assay tobacco BY-2 cells are found sensitive to all the compounds tested. Hyoscyamine and nicotine cause the death of all suspension cultured tobacco cells within 24 hours of incubation at levels of 50 mM and 20 mM respectively. This indicates that the metabolites that plants produce inside the cells can be toxic for themselves and also that this toxicity can result in slow growth of plant cells producing secondary metabolites. Furthermore these results provided us with useful assay systems for evaluating the activity of ABC transporters from different organisms such as yeast, plants and animals in tobacco cell suspension cultures.

EXAMPLE 3: Expression of *PDR5* in tobacco BY-2 suspension cultured cells

3.1 Cloning of *PDR5*

The *PDR5* gene was cloned by the PCR method with the *PfuI* polymerase. To this end oligonucleotides were designed with 5'-terminal *attB* sequences that amplify the entire open reading frame of the *PDR5* gene (4536 nt) as a PCR product that is an efficient substrate for recombination with the Gateway™ system (InvitroGen). Gateway

(Invitrogen) technology provides an alternative rapid method for cloning a sequence into a multiple expression system. The advantage of the Gateway cloning is that fragments present as Entry clones can be subcloned into different Destination vectors in a short time. This technology was used to construct a set of versatile vectors for Agrobacterium -based plant transformation. Our intention was to develop vectors for wide range plant gene analysis. The Gateway-compatible binary vector pPZP200 is the backbone of our constructs (Hajdukiewicz et al. *Plant Molecular Biology* 25, 989-994, 1994). This binary vector is relatively small in size, contains two origins of replication in *E. coli* or in *Agrobacterum* and posses streptomycin and/or spectinomycin for plasmid selection. Three plant selectable marker genes; kanamycin, hygromycin and bar (most frequently used markers in plant transformation) have been used for all constructs. All selectable markers are in a cassette containing nos (nopaline synthase) promoter and nos terminator. These genes were cloned toward the left border of the T-DNA. For construction of all Gateway clones we have used the rfA conversion cassette.

The oligonucleotides used for *PDR5* gene cloning, are 5'-AAAAGCAGGCTACCATGCCCGAGGCCAAGCTTAACAATA-3' as the forward primer and 5'-AGAAAGCTGGGTCCATCTTGGTAAGTTTCTTTCTTAACC-3' as the reverse primer, respectively. As a template genomic DNA prepared from the yeast strains US50-18C or W303 was used. First the PCR fragments were introduced in the Donor Vector pDONR201 (InVitroGen) via the BP reaction to generate the Entry Clone. Then the *PDR5* gene was transferred to the Destination Vector pK7WGD2 (Fig. 1) via the LR reaction, where the gene is under control of the CaMV 35S promoter. The T-DNA of the pK7WGD2 binary vector also bears the kanamycin resistance gene (NPTII) under the control of the pnos promoter as selectable marker for plant transformation and the gene encoding the green fluorescent protein (GFP) under the control of the proID promoter for visual selection of transgenic plant cell lines. The resulting binary plasmids were designated pK7WGD2-ScPDR5-US50 or pK7WGD2-ScPDR5-W303 depending on the yeast genotype from which the gene is isolated. Also the GUS gene was introduced in the pK7WGD2 vector and the resulting binary vector pK7WGD2-GUS served as a control for the experiments described in the examples below.

3.2 Transformation of tobacco BY-2 suspension cultured cells

Plant cell transformations were carried out by applying the ternary vector system (van der Fits et al. (2000) *Plant Mol. Biol.* 43, 495). The plasmid pBBR1MCS-5.virGN54D is

used as a ternary vector. The binary plasmid was introduced into *Agrobacterium tumefaciens* strain LBA4404 already bearing the ternary plasmid by electro-transformation.

5 *Agrobacterium tumefaciens* strains were grown for three days at 28°C on solid LC medium containing 20 µg/ml rifampicin, 40 µg/ml geneticin, 100 µg/ml spectinomycin and 300 µg/ml streptomycin. LC medium contains 1% Bacto Trypton, 0.5% Bacto yeast extract and 0.8% NaCl. From these bacteria a 5-ml liquid culture was grown in LC medium for 48 hours. *N. tabacum* BY-2 cells were grown in MSST medium as described in example 2. For transformation 3 days old cell cultures were used. For
10 cocultivation 4 ml of BY-2 cells was transferred to the corner of a petridish (Ø 80 mm) and 300 µl of the *A. tumefaciens* culture was added. Dishes were taped with respiratory tape and incubated for 3 days at 26°C in the dark. After 3 days the cocultivation mixture was transferred into 20 ml of fresh MSST medium 50 µg/ml kanamycin-B, 500µg/ml carbenicilin and 250 µg/ml vancomycin in 100-ml flasks and
15 further incubated as described in example 2. After one week 4 ml of this cell suspension culture was subcultured in 40 ml of fresh MSST medium with 10 µg/ml of the kanamycin analogue G-418 (geneticin), 500µg/ml carbenicilin and 250 µg/ml vancomycin and grown further till it reached maximal density (similar to stationary, 1-week-old culture) which took two to three weeks, depending on the efficiency of the
20 transformation event. After two additional 1 ml transfer cycles in medium containing 50 µg/ml kanamycin-B, 500µg/ml carbenicilin and 250 µg/ml vancomycin cells were further propagated in an antibiotic-free MSST medium as described in example 2. Elimination of agrobacteria was verified and efficient transgene expression was scored *in vivo* by observing GFP fluorescence with a fluorescence microscope equipped with
25 HQ-GFP band-pass filters for an excitation at 470 and emission at 525 nm.

3.3 Effect of heterologous PDR5 expression in BY-2 suspension cultured cells on alkaloid tolerance

In recombinant BY-2 cells transformed with the PDR5 expression cassettes (from both yeast genotypes), correct PDR5 expression is tested by northern blot analysis using a
30 *PDR5* specific DNA probe and by western blot analysis using a rabbit polyclonal anti-Pdr5p antibody (Decottignies et al. (1999) J. Biol. Chem. 274, 37139). In both lines *PDR5* is efficiently expressed both on the RNA and protein level. Fractionation also shows that the Pdr5 protein is correctly targeted to the plasma membrane. Tolerance of the transformed BY-2 suspension cultures to hyoscyamine and nicotine was

assessed by the two assays described in example 2. As can be deduced from the growth performance assay, BY-2 cell lines expressing the different yeast Pdr5 transporters displayed to varying extents an increased tolerance to both alkaloids as compared to the control GUS-expressing lines. Lines expressing the PDR5 transporter from yeast genotype W303 showed the highest alkaloid tolerance, in particular towards 5 hyoscyamine. In the cell death experiment hyoscyamine was added to a final concentration of 30 mM. Transgene BY-2 cells expressing the Pdr5p from yeast strain W303 again showed the highest tolerance to this tropane alkaloid (Fig. 2). Fold increase in cell death lowered with ca. 35% in the W303 lines whereas US50 lines had 10 a 15% decrease in hyoscyamine induced cell death.

3.4 Effect of heterologous PDR5 expression in BY-2 suspension cultured cells on nicotinic alkaloid production

For the analysis of nicotinic alkaloid accumulation 6-days old recombinant BY-2 cell cultures (BY-2 transformed with pK7WGD2-ScPDR5-US50 or pK7WGD2-ScPDR5- 15 W303 or pK7WGD2-GUS) were washed and diluted ten-fold with fresh hormone free MSST medium. After a recuperation period of 12 hours, the cultures were treated with methyl jasmonate (MeJA). MeJA was dissolved in dimethyl sulfoxide (DMSO) and added to the culture medium at a final concentration of 50 μ M. As a control, cells treated with an equivalent amount of DMSO were included. For alkaloid analysis, three 20 replicate shake flasks with a volume of 20 ml were processed. After vacuum-filtering through Miracloth, cells and medium were separated from each other for intracellular and extracellular alkaloid analysis respectively. The filtered cell mass was transferred to a test tube, frozen and lyophilized (50 mbar, approx. 48 hours). Lyophilised cell samples were extracted for GC-MS analysis by a modified method described by 25 Furuya et al. (1971, Phytochemistry, 10, 1529). Cells were weighed and 25 μ g 5- α -cholestane was added as internal standard. The samples are made alkaline with ammonia (10 % (v/v), 1 ml) and water (2 ml) is added. Alkaloids were extracted by vortexing with 2 ml of dichloromethane. After 30 min the samples were centrifuged (2000 rpm, 10 min) and the lower organic layer was separated and transferred into 30 glass vials. After evaporation to dryness 25 μ l of dichloromethane was added and the samples were silylated with N-methyl-N-(trimethylsilyl)trifluoroacetamide (Pierce, Rockford, USA) for 20 min at 120 °C prior to GC-MS analysis. For alkaloid determination in the medium, 20 ml of the filtered medium was made alkaline with ammonia (10% v/v) to reach pH 9. Internal standards were added (5- α -cholestane and

cotinine). Subsequently this solution was extracted twice with dichloromethane (1:1) and evaporated to dryness. The column was rinsed twice with 1 ml of dichloromethane and the extract was transferred into glass vials. We further proceeded as described above for the cell extract.

5

BY-2 Strain	Nicotine ^b		Anatabine ^b		
	Medium	Cells	Medium	Cells	% in medium
GUS	0	2.00	0.18	157	0.1
ScPDR5-US50	0	0.88	7.40	207	3.6
ScPDR5-W303	0	2.03	5.12	74	6.9

10

^a Measured 72 hours after elicitation with 50 μ M methyl jasmonate. Results are the mean of three independent experiments

^b Indicated in μ g/flask, with 20-ml BY-2 culture per flask

15

In jasmonate elicited BY-2 cells the alkaloids detected after 72 hours are nicotine, anabasine, anatabine and anataline. No alkaloids are detected in DMSO-treated samples, neither in the cells nor in the medium. The results for nicotine and anatabine are shown in Table 2. Of all alkaloids that are produced by elicited BY-2 cells only anatabine is found in the medium. Although only trace amounts of anatabine can be detected extracellularly, comparison of anatabine levels in the different BY-2 cell lines after 72 hours of MeJA treatment clearly shows an enhancement of anatabine export in cell lines transformed with the *PDR5* genes.

20

25 EXAMPLE 4: Expression of vacuole targeted PDR5 in tobacco BY-2 suspension cultured cells

4.1 Construction and cloning of recombinant PDR5

30

To target the yeast PDR5 protein to plant vacuolar membranes two strategies are followed. In the first the N-terminal signal peptide and pro-peptide from sweet potato (MKAFTLALFLALSLYLLPNPAHSRFPNPIRLPTTHEPA, Matsuoka and Nakamura (1991) Proc. Natl. Acad. Sci. USA 88, 834) are fused at the N-terminus of the Pdr5 protein. The resulting recombinant open reading frame is designated ScNVacPDR5. In the second approach the C-terminal amino acids of the tobacco chitinase A (DLLGNGLLVDTM, Neuhaus et al. (1991) Proc. Natl. Acad. Sci. USA 88, 10362) are

added at the C-terminus of the Pdr5 protein. The resulting recombinant open reading frame is designated ScPDR5CVac. Both recombinant genes are put under the control of the CaMV35S promoter and cloned in the binary vector bearing the HYG and GFP genes as described in example 3.1. The resulting binary plasmids are designated pH-ScNVacPDR5-GFP and pH-ScPDR5CVac-GFP, respectively.

4.2 Effect of recombinant PDR5 expression in BY-2 suspension cultured cells on alkaloid tolerance and nicotine production

BY-2 suspension cultured cells are transformed as described in example 3.2 and 5 transgene calli of both ScNVacPDR5 or ScPDR5CVac transformed cells and highly expressing GFP are selected as described in example 3.3. Control of expression of recombinant PDR5 is performed as described in example 3.3 by northern and western blot analysis. Fractionation shows that in both types of transgene lines (NVac or CVac) the Pdr5 protein is targeted to the vacuolar membrane.

To assess tolerance to nicotine and hyoscyamine in transgenic cell lines the same assays as described in example 3.3 are used here to evaluate the functionality of vacuole targeted Pdr5p. The effect of the vacuolar expression of *PDR5* on nicotine production in BY-2 cells is evaluated as described in example 3.4.

EXAMPLE 5: Expression of plant PDR orthologues in tobacco BY-2 suspension cultured cells

5.1. Cloning of AtPDR1

The ABC protein super-family is the largest protein family known and most are membrane proteins active in the transport of a broad range of substances across the membranes. Also in *Arabidopsis* this superfamily is large and diverse (129 ORFs) and a complete inventory has been described by Sanchez-Fernandez et al. (J. Biol. Chem. (2001), 276, 30231). One of the subfamilies of full-length ABC transporters in *Arabidopsis* consists of the PDRs (13 ORFs) of which yeast *PDR5* is the prototype. At least eight of the *PDR5*-like ORFs in *Arabidopsis* are transcriptionally active and have been isolated as ESTs (Sanchez-Fernandez et al. (2001), J. Biol. Chem., 276, 30231). Amongst these is one of the closest *Arabidopsis* *PDR5*-orthologues, namely the *AtPDR1* gene (At3g16340). A cDNA clone of the *AtPDR1* gene is isolated as described for the yeast *PDR5* gene in example 3. To this end the following oligonucleotides were designed: 5'-AAAAGCAGGCTACCATGGAGACGTTATCGAGAA-3' as the forward primer and 5'-

AGAAAGCTGGGTCTATCGTTGTTGGAAGTTGAGC-3' as the reverse primer, respectively. As a template we used cDNA prepared from *Arabidopsis* hypocotyls.

5.2 Cloning of HmPDR1

The biosynthesis of tropane alkaloids such as hyoscyamine and scopolamine in plants of the Solanaceae is very tissue-specific and occurs only in the roots. Later on the alkaloids are transported to the aerial parts, especially the leaves, where they are finally accumulated. In hairy roots however this translocation cannot occur and part of the produced alkaloids are released in the medium. This release can be stimulated by the addition of millimolar amounts of CdCl₂ to the medium (Furze et al. (1991) Plant Cell Rep. 10, 111 and Pitta-Alvarez et al. (2000) Enzyme. Microb. Technol. 26, 252). This indicates the existence of active detoxifying mechanisms against cadmium in which also the tropane alkaloids would be involved. We applied this knowledge to isolate an alkaloid specific PDR-like gene from *Hyoscyamus muticus* hairy roots.

A cDNA clone of a PDR-like gene is isolated from *H. muticus* and is designated HmPDR1. To this end total RNA was prepared from hairy roots of the *H. muticus* KB7 line (Jouhikainen et al. (1999) Planta 208, 545) treated for 30 hours with 1 mM CdCl₂ and was reverse transcribed with the Superscript RTII reverse transcriptase. A nested PCR was subsequently carried out with the *Taq* DNA polymerase using the DNA-RNA hybrid as the template and two sets of degenerate primers designed from highly conserved amino acid sequences in the nucleotide binding folds of known yeast and plant PDR proteins (see Table 3). This PCR yields two fragments derived from the two nucleotide-binding folds which are naturally present in the general tandem repeat structure of ABC proteins. Using specific primers and RT-PCR, 5'RACE and 3'RACE techniques we cloned a full-length cDNA clone, which is designated HmPDR1. The nucleotide sequence of the HmPDR1 cDNA clone is depicted in SEQ ID NO: 1, the amino acid sequence of the HmPDR1 protein is depicted in SEQ ID NO: 2.

Table 3. Degenerate primers used for HmPDR1 cDNA cloning	
Primer	Sequence
ALGG39	5'-CCIRGYKCI GGIAARACNAC-3'
ALGG40	5'-ACICKYTTYTTYTGNC CNCC-3'
ALGG41	5'-TCNARNCC-3'
ALGG42	5'-GGIGTIYTIACIGCNYTNATGGG-3'
ALGG43	5'-TCNARCATCCAIGTIGCNGGRTT-3'
ALGG44	5'-CKCCARTA-3'

To confirm the postulated relationship between the expression of ABC transporter genes and the CdCl₂ induced release of alkaloids we performed an expression analysis of the HmPDR1 gene in CdCl₂ treated *Hyoscyamus* hairy roots (Fig. 3).

5 Quantitative RT-PCR clearly showed that HmPDR1 is upregulated by CdCl₂ elicitation.

5.3 Effect of heterologous AtPDR1 expression in yeast cells on alkaloid tolerance

The *AtPDR1* gene was subcloned in a yeast expression vector (YCp50) between the 5' and 3' regulatory sequences of the yeast *PDR5* gene. This plasmid was then introduced in the yeast AD3 strain (the *pdr5* mutant, see example 1). To analyze the

10 substrate specificity of this plant PDR gene we controlled growth performance of the transformed yeast strains on YPD plates containing the different TAs and NAs as described in example 1. We have shown that the *PDR1* gene of *A. thaliana* was able to restore the growth of the *pdr5* mutant strain on hyoscyamine and nicotine.

5.4 Effect of heterologous AtPDR1 expression in BY-2 suspension cultured cells on alkaloid tolerance

15 The *AtPDR1* gene was transferred to the binary vector pK7WGD2 as described in example 3.1. BY-2 suspension cultured cells were transformed as described in example 3.2. Control of expression of *AtPDR1* is performed by northern blot analysis using a specific DNA probe. To assess tolerance to nicotine and hyoscyamine in

20 transgenic cell lines the same assays as described in example 3.3 were performed in order to evaluate the functionality of AtPDR1p. Transgenic BY-2 cells showed enhanced tolerance to alkaloids as compared to the control GUS expressing line. However, not to the extent of the ScPDR5-W303 expressing line but comparable to the tolerance levels obtained in the ScPDR5-US50 line.

5.5 Effect of AtPDR1 expression in BY-2 suspension cultured cells on nicotinic alkaloid production

25 For the analysis of nicotinic alkaloid accumulation 6-days old recombinant BY-2 cell cultures (pK7WGD2-AtPDR1 en pK7WGD2-GUS) are washed and diluted ten-fold with

30 fresh hormone free MSST medium. After a recuperation period of 12 hours, the cells are treated with methyl jasmonate (MeJA). MeJA is dissolved in dimethyl sulfoxide (DMSO) and added to the culture medium at a final concentration of 50 µM. As a control, cells treated with an equivalent amount of DMSO are included. For alkaloid analysis the same process is followed as in example 3.4.

Claims

1. Use of an expression cassette comprising a gene encoding an ABC-transporter to induce or to enhance the production or the secretion of at least one secondary metabolite by plant cells comprising:
 - 5 - transforming said plant cells with an expression vector comprising said expression cassette,
 - selecting transformed plant cells with an induced or enhanced production or secretion of at least one secondary metabolite, and
 - propagating such selected transformed cells.
- 10 2. Use of an expression cassette according to claim 1 wherein the induction or enhancement of the production of at least one secondary metabolite by plant cells results from enhancing the transport of said metabolite into the vacuole.
3. Use of an expression cassette comprising a gene encoding an ABC-transporter to stimulate the production of secondary metabolites by plants comprising:
 - 15 - transforming said plants with an expression vector comprising said expression cassette,
 - selecting transformed plants with an enhanced production, and
 - propagating such selected transformed plants.
4. Use according to claims 1-3 wherein said secondary metabolites are alkaloids.
- 20 5. Use according to claims 1-3 wherein said ABC-transporters are derived from plants, fungal or mammalian cells.
6. A transgenic plant cell culture, with an enhanced production or secretion of an at least one secondary metabolite, transformed with an expression vector comprising an expression cassette according to claim 1.
- 25 7. A transgenic plant, the cells, seeds and progeny thereof which have an enhanced production or secretion of an at least one secondary metabolite, transformed with an expression vector comprising an expression cassette according to claim 3.
8. A transgenic plant cell culture according to claim 6 further characterized in (1) having an increased vacuolar localisation of said secondary metabolite, or (2)
 - 30 having a secretion or an increased secretion of said secondary metabolite.
9. A transgenic plant according to claim 7 further characterized in having an increased vacuolar localisation of said secondary metabolite.

10. An isolated polypeptide selected from the groups consisting of:

- a. an isolated polypeptide encoded by a polynucleotide comprising the sequence of SEQ ID NO: 1;
- b. an isolated polypeptide comprising a polypeptide sequence having a
5 least 83 % identity to the polypeptide sequence of SEQ ID NO: 2;
- c. fragments and variants of such polypeptides in (a) to (b) that induce or enhance the production or the secretion of at least one secondary metabolite in plants or plant cells.

11. An isolated polynucleotide selected from the groups consisting of:

- a. an isolated polynucleotide comprising a polynucleotide sequence of SEQ
10 ID NO: 1;
- b. an isolated polynucleotide comprising a polynucleotide sequence having at least 91% identity to SEQ ID NO: 1;
- c. fragments and variants of such polynucleotides in (a) to (b) that induce or
15 enhance the production or the secretion of at least one secondary metabolite in plants or plant cells.

20

25

30

Fig. 1

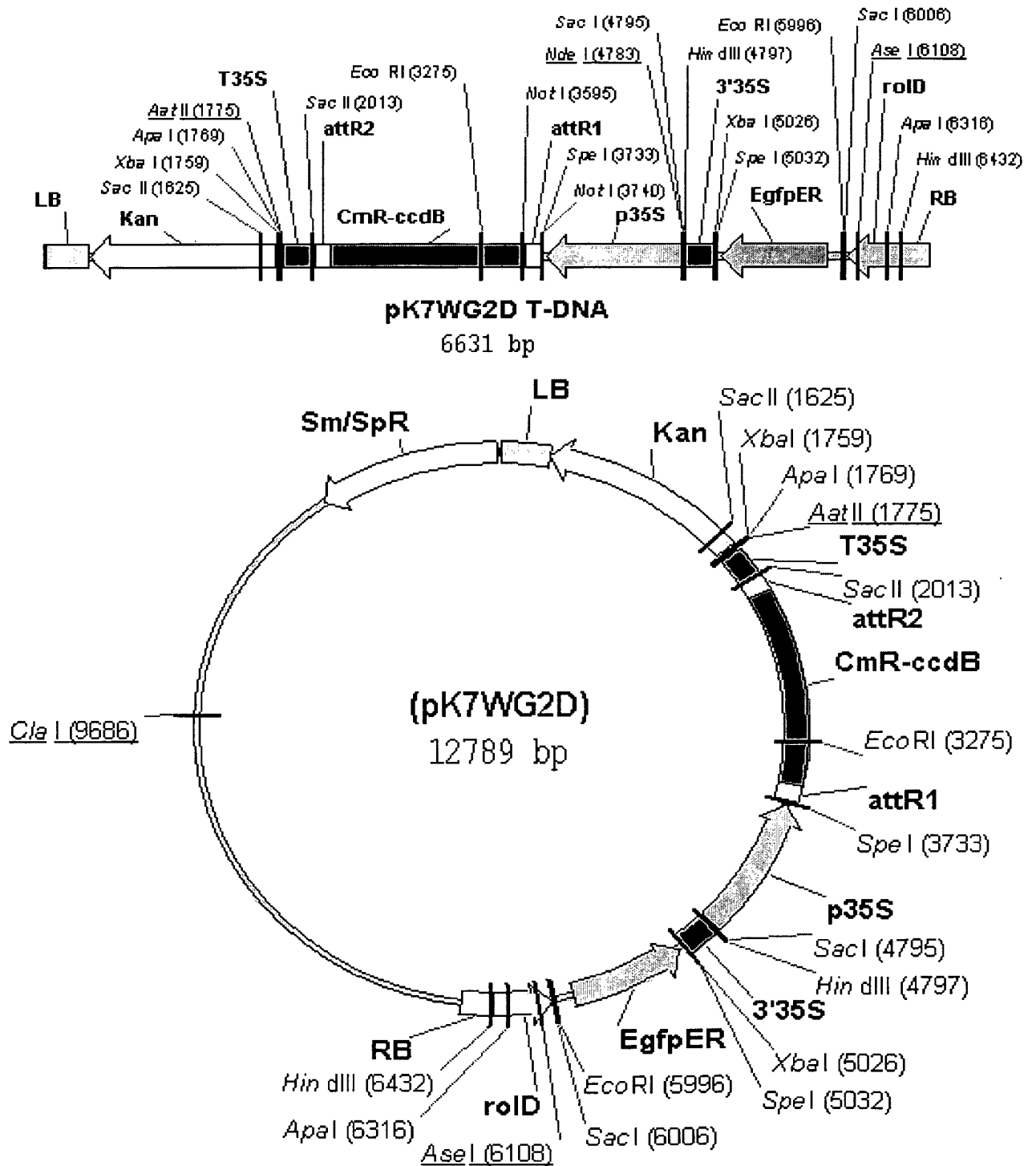


Fig. 2

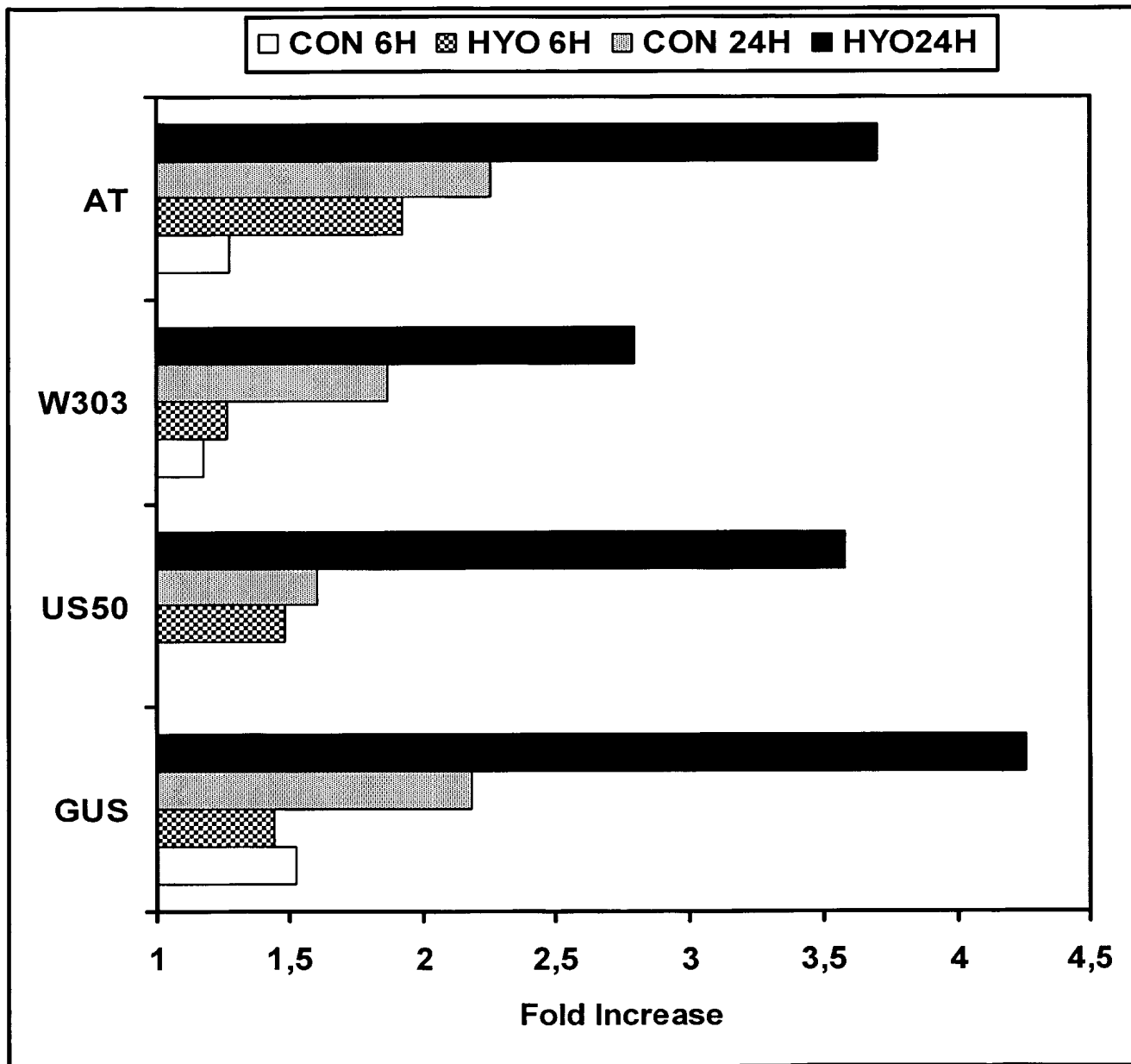
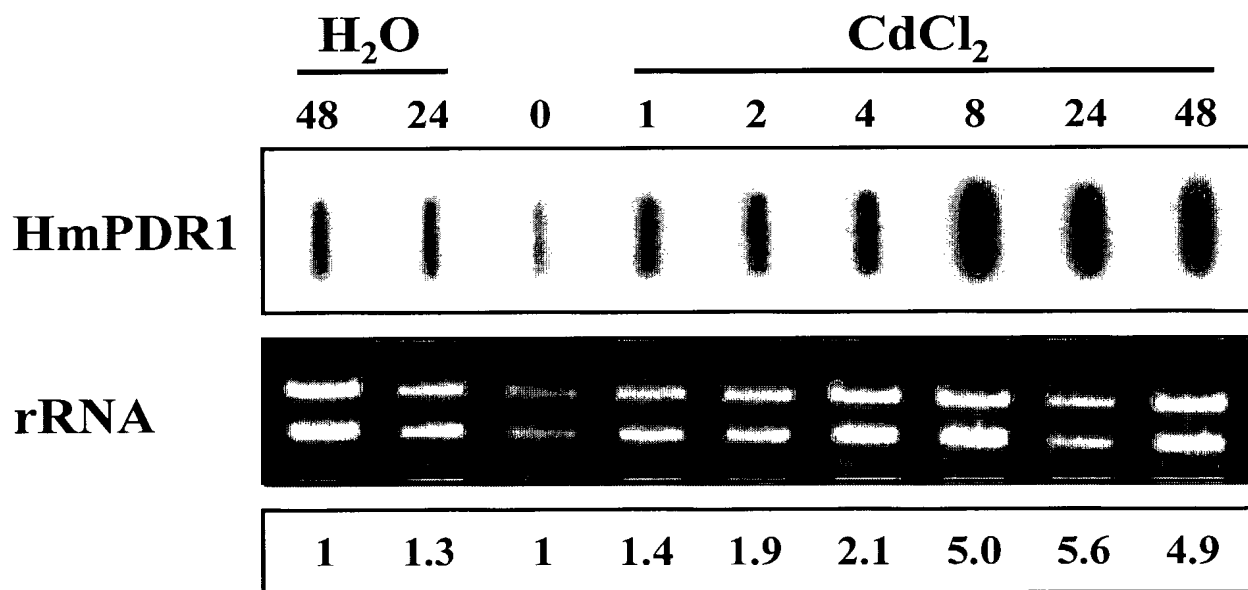


Fig. 3



V082.ST25.txt
SEQUENCE LISTING

<110> VLAAMS INTERUNIVERSITAIR INSTITUUT VOOR BIOTECHNOLOGIE VZW

<120> THE USE OF GENES ENCODING MEMBRANE TRANSPORTER PUMPS TO STIMULATE THE PRODUCTION OF SECONDARY METABOLITES IN BIOLOGICAL CELLS

<130> DI/ABC/V082

<150> EP01201407.2

<151> 2001-04-18

<160> 15

<170> PatentIn version 3.1

<210> 1

<211> 4571

<212> DNA

<213> Hyoscyamus muticus

<220>

<221> CDS

<222> (133)..(4407)

<223>

<400> 1

atataactaa cttcaccttc tattcattca ttatcaacaa aataatccat tttttatcaa 60

aacttgaagg tgttggtaca agacacaact aatattaatt gctgcatttt aatttaatct 120

tgttggtcca ac atg gag cca tca gat tta agt aat ttc cga ggt cga agt 171
Met Glu Pro Ser Asp Leu Ser Asn Phe Arg Gly Arg Ser
1 5 10

atg aga gga agt atg aga gga agt gta agg gaa aat agt aac tca ata 219
Met Arg Gly Ser Met Arg Gly Ser Val Arg Glu Asn Ser Asn Ser Ile
15 20 25

tgg agg aac aat gga gtt gaa ata ttt tca aga tca act aga gat gaa 267
Trp Arg Asn Asn Gly Val Glu Ile Phe Ser Arg Ser Thr Arg Asp Glu
30 35 40 45

gat gat gaa gag gca tta aaa tgg gca gca ctt gag aaa tta cca aca 315
Asp Asp Glu Glu Ala Leu Lys Trp Ala Ala Leu Glu Lys Leu Pro Thr
50 55 60

tat gat aga tta aga aaa ggt ata ttg ttt gga tca caa ggt act ggt 363
Tyr Asp Arg Leu Arg Lys Gly Ile Leu Phe Gly Ser Gln Gly Thr Gly
65 70 75

gtt gct gaa gtt gat gta gat gat ctt ggt gtt caa caa agg aag aat 411
Val Ala Glu Val Asp Val Asp Asp Leu Gly Val Gln Gln Arg Lys Asn
80 85 90

ttg ctt gac aga ctt gtt aaa att gct gaa gaa gat aat gag aag ttc 459
Leu Leu Asp Arg Leu Val Lys Ile Ala Glu Glu Asp Asn Glu Lys Phe
95 100 105

ttg ttg aaa ctc aag aac agg att gac agg gtt ggg att gat ttt cca 507
Leu Leu Lys Leu Lys Asn Arg Ile Asp Arg Val Gly Ile Asp Phe Pro
110 115 120 125

tct ata gaa gtg aga ttt gag cat ctg aat att gag gca gat gca tat 555
Ser Ile Glu Val Arg Phe Glu His Leu Asn Ile Glu Ala Asp Ala Tyr
130 135 140

V082.ST25.txt

ggt	ggt	agc	aga	gct	ttg	cct	aca	ttt	acc	aac	ttc	att	tct	aac	ttc	603
Val	Gly	Ser	Arg	Ala	Leu	Pro	Thr	Phe	Thr	Asn	Phe	Ile	Ser	Asn	Phe	
			145					150					155			
att	gag	tcc	ctg	ctg	gat	tca	ctt	cac	atc	ctt	cca	tcg	aaa	aaa	cgt	651
Ile	Glu	Ser	Leu	Leu	Asp	Ser	Leu	His	Ile	Leu	Pro	Ser	Lys	Lys	Arg	
		160					165					170				
tca	ggt	aca	att	ctc	aag	gat	ggt	agt	ggg	atc	gtc	aag	ccc	tgt	cga	699
Ser	Val	Thr	Ile	Leu	Lys	Asp	Val	Ser	Gly	Ile	Val	Lys	Pro	Cys	Arg	
	175					180					185					
atg	act	ctg	ctt	tta	gga	cct	cca	ggg	tct	ggg	aaa	aca	act	ttg	tta	747
Met	Thr	Leu	Leu	Leu	Gly	Pro	Pro	Gly	Ser	Gly	Lys	Thr	Thr	Leu	Leu	
190					195			200							205	
ctt	gct	ttg	gct	gga	aaa	ctt	gat	tct	gct	cta	agg	ggt	acg	ggg	aag	795
Leu	Ala	Leu	Ala	Gly	Lys	Leu	Asp	Ser	Ala	Leu	Arg	Val	Thr	Gly	Lys	
				210					215					220		
gtg	acg	tat	aat	gga	cac	gaa	tta	cat	gaa	ttt	gtg	cca	caa	aga	act	843
Val	Thr	Tyr	Asn	Gly	His	Glu	Leu	His	Glu	Phe	Val	Pro	Gln	Arg	Thr	
			225					230						235		
gcg	gcc	tat	att	agc	cag	cat	gat	ttg	cat	att	gga	gaa	atg	act	gtc	891
Ala	Ala	Tyr	Ile	Ser	Gln	His	Asp	Leu	His	Ile	Gly	Glu	Met	Thr	Val	
		240					245					250				
aga	gaa	act	ttg	gag	ttc	tct	gca	aga	tgc	caa	gga	ggt	ggt	tct	cgt	939
Arg	Glu	Thr	Leu	Glu	Phe	Ser	Ala	Arg	Cys	Gln	Gly	Val	Gly	Ser	Arg	
	255					260					265					
tac	gaa	atg	ttg	gcc	gaa	ctg	tca	aga	aga	gag	aaa	gcg	gct	aat	atc	987
Tyr	Glu	Met	Leu	Ala	Glu	Leu	Ser	Arg	Arg	Glu	Lys	Ala	Ala	Asn	Ile	
270					275					280					285	
aaa	cca	gat	gct	gat	att	gac	atg	ttc	atg	aag	gct	gca	tca	act	gaa	1035
Lys	Pro	Asp	Ala	Asp	Ile	Asp	Met	Phe	Met	Lys	Ala	Ala	Ser	Thr	Glu	
				290					295					300		
ggg	caa	gaa	gcc	aaa	gtg	att	act	gat	tat	ggt	ctt	aag	att	ctg	gga	1083
Gly	Gln	Glu	Ala	Lys	Val	Ile	Thr	Asp	Tyr	Val	Leu	Lys	Ile	Leu	Gly	
			305					310					315			
ctg	gat	att	tgt	gca	gat	act	atg	gtg	gga	gat	caa	atg	ata	agg	ggt	1131
Leu	Asp	Ile	Cys	Ala	Asp	Thr	Met	Val	Gly	Asp	Gln	Met	Ile	Arg	Gly	
		320					325					330				
att	tca	gga	gga	cag	aag	aag	cgt	gtc	act	act	ggg	gaa	atg	att	gtc	1179
Ile	Ser	Gly	Gly	Gln	Lys	Lys	Arg	Val	Thr	Thr	Gly	Glu	Met	Ile	Val	
	335					340					345					
gga	ccg	tct	aaa	gcc	ctt	ttc	atg	gat	gaa	att	tca	act	gga	ctt	gac	1227
Gly	Pro	Ser	Lys	Ala	Leu	Phe	Met	Asp	Glu	Ile	Ser	Thr	Gly	Leu	Asp	
350					355					360					365	
agt	tcc	aca	act	tac	tcc	atc	gtg	aat	tcc	cta	aag	caa	tct	ggt	caa	1275
Ser	Ser	Thr	Thr	Tyr	Ser	Ile	Val	Asn	Ser	Leu	Lys	Gln	Ser	Val	Gln	
				370					375					380		
atc	ttg	aaa	gga	aca	gct	ctg	att	tct	ctc	ttg	cag	cct	gcc	ccc	gag	1323
Ile	Leu	Lys	Gly	Thr	Ala	Leu	Ile	Ser	Leu	Leu	Gln	Pro	Ala	Pro	Glu	
			385					390					395			
act	tac	aac	ttg	ttc	gat	gat	att	ggt	ctg	cta	tca	gat	ggc	tac	att	1371
Thr	Tyr	Asn	Leu	Phe	Asp	Asp	Ile	Val	Leu	Leu	Ser	Asp	Gly	Tyr	Ile	
		400					405						410			

V082.ST25.txt

ggt	tat	cag	ggt	cca	cga	gag	gaa	gtg	ctc	gat	ttc	ttt	gaa	tcc	atg	1419
Val	Tyr	Gln	Gly	Pro	Arg	Glu	Glu	Val	Leu	Asp	Phe	Phe	Glu	Ser	Met	
	415					420					425					
gga	ttc	aaa	tgc	ccc	aac	aga	aaa	ggc	gtg	gct	gac	ttc	ttg	caa	gaa	1467
Gly	Phe	Lys	Cys	Pro	Asn	Arg	Lys	Gly	Val	Ala	Asp	Phe	Leu	Gln	Glu	
430					435				440						445	
ggt	aca	tct	aag	aag	gat	caa	cag	caa	tat	tgg	gta	aag	agg	gac	gag	1515
Val	Thr	Ser	Lys	Lys	Asp	Gln	Gln	Gln	Tyr	Trp	Val	Lys	Arg	Asp	Glu	
				450					455					460		
cct	tat	agg	ttt	att	aca	tca	aaa	gaa	ttt	gct	gag	gct	tat	caa	tct	1563
Pro	Tyr	Arg	Phe	Ile	Thr	Ser	Lys	Glu	Phe	Ala	Glu	Ala	Tyr	Gln	Ser	
			465					470						475		
ttc	cat	ggt	ggg	aga	aaa	gta	agc	gat	gaa	ctt	aca	acc	gca	ttt	gac	1611
Phe	His	Val	Gly	Arg	Lys	Val	Ser	Asp	Glu	Leu	Thr	Thr	Ala	Phe	Asp	
		480					485					490				
aag	agc	aaa	agc	cac	cct	gct	gct	ttg	act	act	gaa	aag	tat	ggt	att	1659
Lys	Ser	Lys	Ser	His	Pro	Ala	Ala	Leu	Thr	Thr	Glu	Lys	Tyr	Gly	Ile	
	495				500						505					
gga	gtg	aaa	caa	ctt	ttg	aag	ggt	tgc	acg	gaa	aga	gag	ttc	ctt	cta	1707
Gly	Val	Lys	Gln	Leu	Leu	Lys	Val	Cys	Thr	Glu	Arg	Glu	Phe	Leu	Leu	
510				515						520					525	
atg	cag	agg	aat	tca	ttt	ggt	tac	atc	ttc	aaa	ttc	ttt	cag	ctt	atg	1755
Met	Gln	Arg	Asn	Ser	Phe	Val	Tyr	Ile	Phe	Lys	Phe	Phe	Gln	Leu	Met	
				530					535					540		
gta	att	gca	ctt	atg	aca	atg	acc	ata	ttt	ttt	cga	act	aag	atg	tct	1803
Val	Ile	Ala	Leu	Met	Thr	Met	Thr	Ile	Phe	Phe	Arg	Thr	Lys	Met	Ser	
			545					550					555			
cgg	gat	act	gag	acc	gat	gga	gga	att	tat	tct	ggt	gct	ctc	ttt	ttt	1851
Arg	Asp	Thr	Glu	Thr	Asp	Gly	Gly	Ile	Tyr	Ser	Gly	Ala	Leu	Phe	Phe	
		560				565						570				
acg	ggt	ggt	atg	ctt	atg	ttt	aat	ggt	ttg	tct	gag	ctt	cct	ttg	aca	1899
Thr	Val	Val	Met	Leu	Met	Phe	Asn	Gly	Leu	Ser	Glu	Leu	Pro	Leu	Thr	
	575					580					585					
ctc	tac	aag	ctc	ccg	gtc	ttc	tac	aag	caa	agg	gac	ttt	ctc	ttc	tat	1947
Leu	Tyr	Lys	Leu	Pro	Val	Phe	Tyr	Lys	Gln	Arg	Asp	Phe	Leu	Phe	Tyr	
590					595				600						605	
cct	tca	tgg	gct	tat	gca	ggt	cct	tca	tgg	atc	cta	aaa	atc	cct	gta	1995
Pro	Ser	Trp	Ala	Tyr	Ala	Val	Pro	Ser	Trp	Ile	Leu	Lys	Ile	Pro	Val	
				610					615					620		
act	ttt	ctt	gaa	ggt	ggg	atg	tgg	gtg	ttt	ctc	acc	tat	tat	gtc	atc	2043
Thr	Phe	Leu	Glu	Val	Gly	Met	Trp	Val	Phe	Leu	Thr	Tyr	Tyr	Val	Ile	
			625					630						635		
gga	ttt	gat	cct	aat	ggt	gga	aga	ttt	ttc	aaa	caa	ttt	ttg	cta	ctc	2091
Gly	Phe	Asp	Pro	Asn	Val	Gly	Arg	Phe	Phe	Lys	Gln	Phe	Leu	Leu	Leu	
		640					645					650				
ata	gta	gta	aac	cag	atg	gca	tca	gga	ttg	ttc	agg	ttt	att	gca	gca	2139
Ile	Val	Val	Asn	Gln	Met	Ala	Ser	Gly	Leu	Phe	Arg	Phe	Ile	Ala	Ala	
	655					660					665					
ggt	gga	agg	acc	atg	gga	ggt	gct	agc	aca	ttt	gga	gca	ttt	gcg	ctg	2187
Val	Gly	Arg	Thr	Met	Gly	Val	Ala	Ser	Thr	Phe	Gly	Ala	Phe	Ala	Leu	
670					675					680					685	

V082.ST25.txt

ctt tta caa ttt gca ttg ggc ggt ttt gtc ctt gca cga act gac gtg	2235
Leu Leu Gln Phe Ala Leu Gly Gly Phe Val Leu Ala Arg Thr Asp Val	
690 695 700	
aag gac tgg tgg att tgg gga tac tgg acc tca cca ctt atg ttc tca	2283
Lys Asp Trp Trp Ile Trp Gly Tyr Trp Thr Ser Pro Leu Met Phe Ser	
705 710 715	
gtg aat gca atc ctt gtg aat gaa ttt gac gga aaa aag tgg aaa cat	2331
Val Asn Ala Ile Leu Val Asn Glu Phe Asp Gly Lys Lys Trp Lys His	
720 725 730	
att gcg cca aat gga act gag ccg ctt gga cct gca gtg gta aga tct	2379
Ile Ala Pro Asn Gly Thr Glu Pro Leu Gly Pro Ala Val Val Arg Ser	
735 740 745	
caa ggg ttc ttt ccc gat gca tat tgg tac tgg ata ggt gta ggt gca	2427
Gln Gly Phe Phe Pro Asp Ala Tyr Trp Tyr Trp Ile Gly Val Gly Ala	
750 755 760 765	
ctt gtt gga ttc aca gtt ctg ttt aac ata gcc tac agt ctt gct ctc	2475
Leu Val Gly Phe Thr Val Leu Phe Asn Ile Ala Tyr Ser Leu Ala Leu	
770 775 780	
gct tat ctt aac cca ttc gga aag cca caa gct aca att tca gaa gaa	2523
Ala Tyr Leu Asn Pro Phe Gly Lys Pro Gln Ala Thr Ile Ser Glu Glu	
785 790 795	
agt gag agc aac gaa aat agt gaa tta tca acc cca ata gct agt aca	2571
Ser Glu Ser Asn Glu Asn Ser Glu Leu Ser Thr Pro Ile Ala Ser Thr	
800 805 810	
acg gaa gga gat tct gtc ggt gag aat cag aat aag aaa gga atg gtt	2619
Thr Glu Gly Asp Ser Val Gly Glu Asn Gln Asn Lys Lys Gly Met Val	
815 820 825	
ctt cca ttt gaa ccc cat tcc atc acc ttt gat gaa gtt gta tac tca	2667
Leu Pro Phe Glu Pro His Ser Ile Thr Phe Asp Glu Val Val Tyr Ser	
830 835 840 845	
gtt gac atg cct ccg gaa atg aga gag caa ggt acc agt gac aat aga	2715
Val Asp Met Pro Pro Glu Met Arg Glu Gln Gly Thr Ser Asp Asn Arg	
850 855 860	
ttg gta ctt ttg aag agt gtg agt gga gct ttc agg cca ggt gtt ctc	2763
Leu Val Leu Leu Lys Ser Val Ser Gly Ala Phe Arg Pro Gly Val Leu	
865 870 875	
aca gct ctg atg gga gtt agt gga gcc ggt aaa aca aca ttg atg gat	2811
Thr Ala Leu Met Gly Val Ser Gly Ala Gly Lys Thr Thr Leu Met Asp	
880 885 890	
gtc tta gct gga agg aaa act gga ggt tac att gac gga agc att aac	2859
Val Leu Ala Gly Arg Lys Thr Gly Gly Tyr Ile Asp Gly Ser Ile Asn	
895 900 905	
att tct gga tat ccc aag aag caa gaa aca ttt gca cgt att tct gga	2907
Ile Ser Gly Tyr Pro Lys Lys Gln Glu Thr Phe Ala Arg Ile Ser Gly	
910 915 920 925	
tac tgt gaa caa aac gac atc cat tca cct tat gta aca gtt tat gag	2955
Tyr Cys Glu Gln Asn Asp Ile His Ser Pro Tyr Val Thr Val Tyr Glu	
930 935 940	
tcc ttg gtt tac tcg gct tgg ctg cgt tta cct caa gac gtt gat gag	3003
Ser Leu Val Tyr Ser Ala Trp Leu Arg Leu Pro Gln Asp Val Asp Glu	
945 950 955	

V082.ST25.txt

aaa aag cga atg atg ttc gtt gaa caa gtt atg gaa ctt gtg gag ctt	3051
Lys Lys Arg Met Met Phe Val Glu Gln Val Met Glu Leu Val Glu Leu	
960 965 970	
aca cca cta aga tct gcc tta gtc ggg ttg cca gga gtt aat ggt ctg	3099
Thr Pro Leu Arg Ser Ala Leu Val Gly Leu Pro Gly Val Asn Gly Leu	
975 980 985	
acg att gca gtt gaa cta gta gca aac ccc tct atc att ttt atg gac	3147
Thr Ile Ala Val Glu Leu Val Ala Asn Pro Ser Ile Ile Phe Met Asp	
990 995 1000 1005	
gaa cca act tca gga ttg gat gca aga gct gct gca att gtg atg	3192
Glu Pro Thr Ser Gly Leu Asp Ala Arg Ala Ala Ile Val Met	
1010 1015 1020	
aga gct gtt agg aac act gtc gat aca ggg aga act gtt gtt tgt	3237
Arg Ala Val Arg Asn Thr Val Asp Thr Gly Arg Thr Val Val Cys	
1025 1030 1035	
acc att cat cag cct agc att gac att ttt gag gcg ttc gat gag	3282
Thr Ile His Gln Pro Ser Ile Asp Ile Phe Glu Ala Phe Asp Glu	
1040 1045 1050	
tta ttt ctt atg aaa cga gga gga caa gag ata tac gtc ggt cca	3327
Leu Phe Leu Met Lys Arg Gly Gly Gln Glu Ile Tyr Val Gly Pro	
1055 1060 1065	
tta ggt cgt gag tca agc cat ttg ata aag tat ttt gag tct ata	3372
Leu Gly Arg Glu Ser Ser His Leu Ile Lys Tyr Phe Glu Ser Ile	
1070 1075 1080	
ccc ggt gta acc aaa ata aag gag ggg tac aat cca gca act tgg	3417
Pro Gly Val Thr Lys Ile Lys Glu Gly Tyr Asn Pro Ala Thr Trp	
1085 1090 1095	
atg tta gaa gtc aca tct tcg tct caa gaa ata aca tta ggt gtt	3462
Met Leu Glu Val Thr Ser Ser Ser Gln Glu Ile Thr Leu Gly Val	
1100 1105 1110	
gat ttt acc gaa tta tac aag aac tca gac ctc ttc cgg agg aac	3507
Asp Phe Thr Glu Leu Tyr Lys Asn Ser Asp Leu Phe Arg Arg Asn	
1115 1120 1125	
aaa gct ttg atc gag gaa cta agt gtg cca cgc cct ggt aca agt	3552
Lys Ala Leu Ile Glu Glu Leu Ser Val Pro Arg Pro Gly Thr Ser	
1130 1135 1140	
gac ctg cat ttt gaa act gaa ttc tca cag cca ttt tgg gtc caa	3597
Asp Leu His Phe Glu Thr Glu Phe Ser Gln Pro Phe Trp Val Gln	
1145 1150 1155	
tgt atg gct tgt ttg tgg aag caa cac tgg tca tac tgg cgt aat	3642
Cys Met Ala Cys Leu Trp Lys Gln His Trp Ser Tyr Trp Arg Asn	
1160 1165 1170	
ccg gct tat act gca gtc aga ttt ctc ttc aca acc ttc ata gct	3687
Pro Ala Tyr Thr Ala Val Arg Phe Leu Phe Thr Thr Phe Ile Ala	
1175 1180 1185	
ctc ata ttc ggg tca atg ttc tgg gat att ggt aca aaa gtg agt	3732
Leu Ile Phe Gly Ser Met Phe Trp Asp Ile Gly Thr Lys Val Ser	
1190 1195 1200	
ggg ccc caa gat ctg aaa aac gcc atg gga tct atg tat gct gct	3777
Gly Pro Gln Asp Leu Lys Asn Ala Met Gly Ser Met Tyr Ala Ala	
1205 1210 1215	

V082.ST25.txt

```

gtc ctc ttc ctt ggt  gtg cag aat tca tcg  tca gtt cag ccc gtt      3822
Val Leu Phe Leu Gly  Val Gln Asn Ser Ser  Ser Val Gln Pro Val
1220 1225 1230

gta tct gtc gaa cgt  act gta ttt tac aga  gaa aaa gct gct gga      3867
Val Ser Val Glu Arg  Thr Val Phe Tyr Arg  Glu Lys Ala Ala Gly
1235 1240 1245

atg tac tcc gcg atg  ccc tat gcc ttt gca  caa gtt ttc atc gaa      3912
Met Tyr Ser Ala Met  Pro Tyr Ala Phe Ala  Gln Val Phe Ile Glu
1250 1255 1260

att cct tat gta ttt  gta caa gct gtt gtc  tat ggt ctc att gtc      3957
Ile Pro Tyr Val Phe  Val Gln Ala Val Val  Val Tyr Gly Leu Ile Val
1265 1270 1275

tat tct atg att gga  ttt gaa tgg act gct  gca aaa ttc ttt tgg      4002
Tyr Ser Met Ile Gly  Phe Glu Trp Thr Thr  Ala Lys Phe Phe Trp
1280 1285 1290

tac ttc ttc ttc atg  ttc ttc acc ttc ctc  tac ttc acc ttc ttt      4047
Tyr Phe Phe Phe Met  Phe Phe Thr Phe Leu  Tyr Phe Thr Phe Phe
1295 1300 1305

ggc atg atg acc gtg  gct gtt acc ccg aac  caa aat gtt gct tca      4092
Gly Met Met Thr Val  Ala Val Thr Pro Asn  Gln Asn Val Ala Ser
1310 1315 1320

atc gtt gcc gga ttc  ttc tat aca gta tgg  aat ctc ttc tca gga      4137
Ile Val Ala Gly Phe  Phe Tyr Thr Val Trp  Asn Leu Phe Ser Gly
1325 1330 1335

ttc atc gtt cca cga  cct cgt att ccg ata  tgg tgg aga tgg tac      4182
Phe Ile Val Pro Arg  Pro Arg Ile Pro Ile  Trp Trp Arg Trp Tyr
1340 1345 1350

tac tgg gct tgc cct  gtt gca tgg aca ttg  tat ggt ttg gtt gca      4227
Tyr Trp Ala Cys Pro  Val Ala Trp Thr Leu  Tyr Gly Leu Val Ala
1355 1360 1365

tct caa ttt gga gac  ctc caa gat aca att  aat gat caa act gtg      4272
Ser Gln Phe Gly Asp  Leu Gln Asp Thr Ile  Asn Asp Gln Thr Val
1370 1375 1380

gaa gat ttc ttg aga  agt agc tat gga ttt  aag cat gat ttt cta      4317
Glu Asp Phe Leu Arg  Ser Ser Tyr Gly Phe  Lys His Asp Phe Leu
1385 1390 1395

gga gtt gtt gca gct  gtg atc gtt gca ttt  gca gtt gtt ttc gcc      4362
Gly Val Val Ala Ala  Val Ile Val Ala Phe  Ala Val Val Phe Ala
1400 1405 1410

ttc aca ttt gct ttg  ggt atc aag gca ttc  aat ttc cag aga aga      4407
Phe Thr Phe Ala Leu  Gly Ile Lys Ala Phe  Asn Phe Gln Arg Arg
1415 1420 1425

tagaaatagt atttatttgt attcccagtt gttcatatat tcttgaataa gcttatgaag  4467
ttttaagtta ctgaatatgt tatgtcttac taatctttct caattcccag ttttgttgta  4527
taataacatg taataattgt tattcaaaaa aaaaaaaaaa aaaa 4571

```

```

<210> 2
<211> 1425
<212> PRT
<213> Hyoscyamus muticus

```

V082.ST25.txt

<400> 2

Met Glu Pro Ser Asp Leu Ser Asn Phe Arg Gly Arg Ser Met Arg Gly
 1 5 10 15
 Ser Met Arg Gly Ser Val Arg Glu Asn Ser Asn Ser Ile Trp Arg Asn
 20 25 30
 Asn Gly Val Glu Ile Phe Ser Arg Ser Thr Arg Asp Glu Asp Asp Glu
 35 40 45
 Glu Ala Leu Lys Trp Ala Ala Leu Glu Lys Leu Pro Thr Tyr Asp Arg
 50 55 60
 Leu Arg Lys Gly Ile Leu Phe Gly Ser Gln Gly Thr Gly Val Ala Glu
 65 70 75 80
 Val Asp Val Asp Asp Leu Gly Val Gln Gln Arg Lys Asn Leu Leu Asp
 85 90 95
 Arg Leu Val Lys Ile Ala Glu Glu Asp Asn Glu Lys Phe Leu Leu Lys
 100 105 110
 Leu Lys Asn Arg Ile Asp Arg Val Gly Ile Asp Phe Pro Ser Ile Glu
 115 120 125
 Val Arg Phe Glu His Leu Asn Ile Glu Ala Asp Ala Tyr Val Gly Ser
 130 135 140
 Arg Ala Leu Pro Thr Phe Thr Asn Phe Ile Ser Asn Phe Ile Glu Ser
 145 150 155 160
 Leu Leu Asp Ser Leu His Ile Leu Pro Ser Lys Lys Arg Ser Val Thr
 165 170 175
 Ile Leu Lys Asp Val Ser Gly Ile Val Lys Pro Cys Arg Met Thr Leu
 180 185 190
 Leu Leu Gly Pro Pro Gly Ser Gly Lys Thr Thr Leu Leu Leu Ala Leu
 195 200 205
 Ala Gly Lys Leu Asp Ser Ala Leu Arg Val Thr Gly Lys Val Thr Tyr
 210 215 220
 Asn Gly His Glu Leu His Glu Phe Val Pro Gln Arg Thr Ala Ala Tyr
 225 230 235 240
 Ile Ser Gln His Asp Leu His Ile Gly Glu Met Thr Val Arg Glu Thr
 245 250 255
 Leu Glu Phe Ser Ala Arg Cys Gln Gly Val Gly Ser Arg Tyr Glu Met

V082.ST25.txt
 265

260

270

Leu Ala Glu Leu Ser Arg Arg Glu Lys Ala Ala Asn Ile Lys Pro Asp
 275 280 285

Ala Asp Ile Asp Met Phe Met Lys Ala Ala Ser Thr Glu Gly Gln Glu
 290 295 300

Ala Lys Val Ile Thr Asp Tyr Val Leu Lys Ile Leu Gly Leu Asp Ile
 305 310 315 320

Cys Ala Asp Thr Met Val Gly Asp Gln Met Ile Arg Gly Ile Ser Gly
 325 330 335

Gly Gln Lys Lys Arg Val Thr Thr Gly Glu Met Ile Val Gly Pro Ser
 340 345 350

Lys Ala Leu Phe Met Asp Glu Ile Ser Thr Gly Leu Asp Ser Ser Thr
 355 360 365

Thr Tyr Ser Ile Val Asn Ser Leu Lys Gln Ser Val Gln Ile Leu Lys
 370 375 380

Gly Thr Ala Leu Ile Ser Leu Leu Gln Pro Ala Pro Glu Thr Tyr Asn
 385 390 395 400

Leu Phe Asp Asp Ile Val Leu Leu Ser Asp Gly Tyr Ile Val Tyr Gln
 405 410 415

Gly Pro Arg Glu Glu Val Leu Asp Phe Phe Glu Ser Met Gly Phe Lys
 420 425 430

Cys Pro Asn Arg Lys Gly Val Ala Asp Phe Leu Gln Glu Val Thr Ser
 435 440 445

Lys Lys Asp Gln Gln Gln Tyr Trp Val Lys Arg Asp Glu Pro Tyr Arg
 450 455 460

Phe Ile Thr Ser Lys Glu Phe Ala Glu Ala Tyr Gln Ser Phe His Val
 465 470 475 480

Gly Arg Lys Val Ser Asp Glu Leu Thr Thr Ala Phe Asp Lys Ser Lys
 485 490 495

Ser His Pro Ala Ala Leu Thr Thr Glu Lys Tyr Gly Ile Gly Val Lys
 500 505 510

Gln Leu Leu Lys Val Cys Thr Glu Arg Glu Phe Leu Leu Met Gln Arg
 515 520 525

Asn Ser Phe Val Tyr Ile Phe Lys Phe Phe Gln Leu Met Val Ile Ala

V082.ST25.txt

530

535

540

Leu Met Thr Met Thr Ile Phe Phe Arg Thr Lys Met Ser Arg Asp Thr
 545 550 555 560

Glu Thr Asp Gly Gly Ile Tyr Ser Gly Ala Leu Phe Phe Thr Val Val
 565 570 575

Met Leu Met Phe Asn Gly Leu Ser Glu Leu Pro Leu Thr Leu Tyr Lys
 580 585 590

Leu Pro Val Phe Tyr Lys Gln Arg Asp Phe Leu Phe Tyr Pro Ser Trp
 595 600 605

Ala Tyr Ala Val Pro Ser Trp Ile Leu Lys Ile Pro Val Thr Phe Leu
 610 615 620

Glu Val Gly Met Trp Val Phe Leu Thr Tyr Tyr Val Ile Gly Phe Asp
 625 630 635 640

Pro Asn Val Gly Arg Phe Phe Lys Gln Phe Leu Leu Leu Ile Val Val
 645 650 655

Asn Gln Met Ala Ser Gly Leu Phe Arg Phe Ile Ala Ala Val Gly Arg
 660 665 670

Thr Met Gly Val Ala Ser Thr Phe Gly Ala Phe Ala Leu Leu Leu Gln
 675 680 685

Phe Ala Leu Gly Gly Phe Val Leu Ala Arg Thr Asp Val Lys Asp Trp
 690 695 700

Trp Ile Trp Gly Tyr Trp Thr Ser Pro Leu Met Phe Ser Val Asn Ala
 705 710 715 720

Ile Leu Val Asn Glu Phe Asp Gly Lys Lys Trp Lys His Ile Ala Pro
 725 730 735

Asn Gly Thr Glu Pro Leu Gly Pro Ala Val Val Arg Ser Gln Gly Phe
 740 745 750

Phe Pro Asp Ala Tyr Trp Tyr Trp Ile Gly Val Gly Ala Leu Val Gly
 755 760 765

Phe Thr Val Leu Phe Asn Ile Ala Tyr Ser Leu Ala Leu Ala Tyr Leu
 770 775 780

Asn Pro Phe Gly Lys Pro Gln Ala Thr Ile Ser Glu Glu Ser Glu Ser
 785 790 795 800

Asn Glu Asn Ser Glu Leu Ser Thr Pro Ile Ala Ser Thr Thr Glu Gly

V082.ST25.txt

805

810

815

Asp Ser Val Gly Glu Asn Gln Asn Lys Lys Gly Met Val Leu Pro Phe
 820 825 830

Glu Pro His Ser Ile Thr Phe Asp Glu Val Val Tyr Ser Val Asp Met
 835 840 845

Pro Pro Glu Met Arg Glu Gln Gly Thr Ser Asp Asn Arg Leu Val Leu
 850 855 860

Leu Lys Ser Val Ser Gly Ala Phe Arg Pro Gly Val Leu Thr Ala Leu
 865 870 875 880

Met Gly Val Ser Gly Ala Gly Lys Thr Thr Leu Met Asp Val Leu Ala
 885 890 895

Gly Arg Lys Thr Gly Gly Tyr Ile Asp Gly Ser Ile Asn Ile Ser Gly
 900 905 910

Tyr Pro Lys Lys Gln Glu Thr Phe Ala Arg Ile Ser Gly Tyr Cys Glu
 915 920 925

Gln Asn Asp Ile His Ser Pro Tyr Val Thr Val Tyr Glu Ser Leu Val
 930 935 940

Tyr Ser Ala Trp Leu Arg Leu Pro Gln Asp Val Asp Glu Lys Lys Arg
 945 950 955 960

Met Met Phe Val Glu Gln Val Met Glu Leu Val Glu Leu Thr Pro Leu
 965 970 975

Arg Ser Ala Leu Val Gly Leu Pro Gly Val Asn Gly Leu Thr Ile Ala
 980 985 990

Val Glu Leu Val Ala Asn Pro Ser Ile Ile Phe Met Asp Glu Pro Thr
 995 1000 1005

Ser Gly Leu Asp Ala Arg Ala Ala Ala Ile Val Met Arg Ala Val
 1010 1015 1020

Arg Asn Thr Val Asp Thr Gly Arg Thr Val Val Cys Thr Ile His
 1025 1030 1035

Gln Pro Ser Ile Asp Ile Phe Glu Ala Phe Asp Glu Leu Phe Leu
 1040 1045 1050

Met Lys Arg Gly Gly Gln Glu Ile Tyr Val Gly Pro Leu Gly Arg
 1055 1060 1065

Glu Ser Ser His Leu Ile Lys Tyr Phe Glu Ser Ile Pro Gly Val

V082.ST25.txt

1070						1075								1080
Thr	Lys	Ile	Lys	Glu	Gly	Tyr	Asn	Pro	Ala	Thr	Trp	Met	Leu	Glu
	1085					1090					1095			
Val	Thr	Ser	Ser	Ser	Gln	Glu	Ile	Thr	Leu	Gly	Val	Asp	Phe	Thr
	1100					1105					1110			
Glu	Leu	Tyr	Lys	Asn	Ser	Asp	Leu	Phe	Arg	Arg	Asn	Lys	Ala	Leu
	1115					1120					1125			
Ile	Glu	Glu	Leu	Ser	Val	Pro	Arg	Pro	Gly	Thr	Ser	Asp	Leu	His
	1130					1135					1140			
Phe	Glu	Thr	Glu	Phe	Ser	Gln	Pro	Phe	Trp	Val	Gln	Cys	Met	Ala
	1145					1150					1155			
Cys	Leu	Trp	Lys	Gln	His	Trp	Ser	Tyr	Trp	Arg	Asn	Pro	Ala	Tyr
	1160					1165					1170			
Thr	Ala	Val	Arg	Phe	Leu	Phe	Thr	Thr	Phe	Ile	Ala	Leu	Ile	Phe
	1175					1180					1185			
Gly	Ser	Met	Phe	Trp	Asp	Ile	Gly	Thr	Lys	Val	Ser	Gly	Pro	Gln
	1190					1195					1200			
Asp	Leu	Lys	Asn	Ala	Met	Gly	Ser	Met	Tyr	Ala	Ala	Val	Leu	Phe
	1205					1210					1215			
Leu	Gly	Val	Gln	Asn	Ser	Ser	Ser	Val	Gln	Pro	Val	Val	Ser	Val
	1220					1225					1230			
Glu	Arg	Thr	Val	Phe	Tyr	Arg	Glu	Lys	Ala	Ala	Gly	Met	Tyr	Ser
	1235					1240					1245			
Ala	Met	Pro	Tyr	Ala	Phe	Ala	Gln	Val	Phe	Ile	Glu	Ile	Pro	Tyr
	1250					1255					1260			
Val	Phe	Val	Gln	Ala	Val	Val	Tyr	Gly	Leu	Ile	Val	Tyr	Ser	Met
	1265					1270					1275			
Ile	Gly	Phe	Glu	Trp	Thr	Ala	Ala	Lys	Phe	Phe	Trp	Tyr	Phe	Phe
	1280					1285					1290			
Phe	Met	Phe	Phe	Thr	Phe	Leu	Tyr	Phe	Thr	Phe	Phe	Gly	Met	Met
	1295					1300					1305			
Thr	Val	Ala	Val	Thr	Pro	Asn	Gln	Asn	Val	Ala	Ser	Ile	Val	Ala
	1310					1315					1320			
Gly	Phe	Phe	Tyr	Thr	Val	Trp	Asn	Leu	Phe	Ser	Gly	Phe	Ile	Val

V082.ST25.txt

1325						1330						1335		
Pro	Arg	Pro	Arg	Ile	Pro	Ile	Trp	Trp	Arg	Trp	Tyr	Tyr	Trp	Ala
1340						1345					1350			
Cys	Pro	Val	Ala	Trp	Thr	Leu	Tyr	Gly	Leu	Val	Ala	Ser	Gln	Phe
1355						1360					1365			
Gly	Asp	Leu	Gln	Asp	Thr	Ile	Asn	Asp	Gln	Thr	Val	Glu	Asp	Phe
1370						1375					1380			
Leu	Arg	Ser	Ser	Tyr	Gly	Phe	Lys	His	Asp	Phe	Leu	Gly	Val	Val
1385						1390					1395			
Ala	Ala	Val	Ile	Val	Ala	Phe	Ala	Val	Val	Phe	Ala	Phe	Thr	Phe
1400						1405					1410			
Ala	Leu	Gly	Ile	Lys	Ala	Phe	Asn	Phe	Gln	Arg	Arg			
1415						1420					1425			

<210> 3
<211> 40
<212> DNA
<213> Artificial Sequence

<220>
<223> forward primer in example 3.1

<400> 3
aaaaagcagg ctaccatgcc cgaggccaag cttacaata 40

<210> 4
<211> 40
<212> DNA
<213> Artificial Sequence

<220>
<223> reverse primer of example 3.1

<400> 4
agaaagctgg gtccatcttg gtaagtttct tttcttaacc 40

<210> 5
<211> 37
<212> PRT
<213> Ipomoea batatas

<300>
<301> Matsuoka and Nakamura
<302> Propeptide of a precursor to a plant vacuolar protein required for vacuolar
targeting
<303> Proc. Natl. Acad. Sci. USA
<304> 88
<305> 3
<306> 834-8
<307> 1991-02-01
<308> PMID: 1992474
<309> 1991-02-01

V082.ST25.txt

<313> (1)..(37)

<400> 5

Met Lys Ala Phe Thr Leu Ala Leu Phe Leu Ala Leu Ser Leu Tyr Leu
 1 5 10 15

Leu Pro Asn Pro Ala His Ser Arg Phe Asn Pro Ile Arg Leu Pro Thr
 20 25 30

Thr His Glu Pro Ala
 35

<210> 6

<211> 12

<212> PRT

<213> Nicotiana tabacum

<300>

<301> Neuhaus, J.M.; Sticher, L.; Meins, F. and Boller, T.

<302> A short C-terminal sequence is necessary and sufficient for the targeting
 of

chitinases to the plant vacuole

<303> Proc. Natl. Acad. Sci. USA

<304> 88

<305> 22

<306> 10362-10366

<307> 1991-11-15

<308> PMID: 1946457

<309> 1991-11-25

<313> (318)..(329)

<400> 6

Asp Leu Leu Gly Asn Gly Leu Leu Val Asp Thr Met
 1 5 10

<210> 7

<211> 34

<212> DNA

<213> Artificial Sequence

<220>

<223> forward primer in example 5.1

<400> 7

aaaaagcagg ctaccatgga gacggttatcg agaa

34

<210> 8

<211> 34

<212> DNA

<213> Artificial Sequence

<220>

<223> reverse primer in example 5.1

<400> 8

agaaagctgg gtctatcggtt gttggaagtt gagc

34

<210> 9

<211> 12789

<212> DNA

V082.ST25.txt

<213> Artificial Sequence

<220>

<223> vector pK7WG2D

<220>

<221> misc_feature

<222> (4772)..(4772)

<223> n can be any base

<400> 9

```

tgatcacagg cagcaacgct ctgtcatcgt tacaatcaac atgctaccct cgcgagatc      60
atccgtgttt caaaccggc agcttagttg ccgttcttcc gaatagcatc ggtaacatga     120
gcaaagtctg ccgccttaca acggctctcc cgctgacgcc gtcccggact gatgggctgc     180
ctgtatcgag tggtgathtt gtgccgagct gccggtcggg gagctggttg ctggctggtg     240
gcaggatata ttgtgggtgta aacaaattga cgcttagaca acttaataac acattgcgga     300
cgtttttaat gtactgaatt aacgccgaat tgaattatca gcttgcattc cggtcgatct     360
agtaacatag atgacaccgc gcgcgataat ttatcctagt ttgcgcgcta tattttgttt     420
tctatcgcgt attaaatgta taattgcggg actctaatac aaaaacccat ctcataaata     480
acgtcatgca ttacatgtta attattacat gcttaacgta attcaacaga aattatatga     540
taatcatcgc aagaccggca acaggattca atcttaagaa actttattgc caaatgtttg     600
aacgatctgc ttgactctag ctagagtccg aaccccagag tcccgcctcag aagaactcgt     660
caagaaggcg atagaaggcg atgcgctgcg aatcgggagc ggcgataccg taaagcacga     720
ggaagcggtc agcccattcg ccgccaagct cttcagcaat atcacgggta gccaacgcta     780
tgtcctgata gcggctccgc acaccagcc ggccacagtc gatgaatcca gaaaagcggc     840
cattttccac catgatattc ggcaagcagg catcgccttg ggtcacgacg agatcctcgc     900
cgtcgggcat ccgcgccttg agcctggcga acagttcggc tggcgcgagc ccctgatgct     960
cttctgcccag atcatcctga tcgacaagac cggcttccat ccgagtacgt cctcgcctga    1020
tgcgatgttt cgcttggtgg tcgaatgggc aggtagccgg atcaagcgta tgcagccgcc    1080
gcattgcatt agccatgatg gatactttct cggcaggagc aaggtgagat gacaggagat    1140
cctgcccccg cacttcgccc aatagcagcc agtcccttcc cgcttcagtg acaacgctga    1200
gcacagctgc gcaaggaacg cccgtcgtgg ccagccacga tagccgcgct gcctcgtctt    1260
ggagttcatt cagggcaccg gacaggctcg tcttgacaaa aagaaccggg cgcccctgcg    1320
ctgacagccg gaacacggcg gcatcagagc agccgattgt ctggttggtc cagtcatagc    1380
cgaatagcct ctccacccaa gcggccggag aacctgcgtg caatccatct tgttcaatca    1440
tgccctgatc gagttgagag tgaatatgag actctaattg gataccgagg ggaatttatg    1500
gaacgtcagt ggagcatttt tgacaagaaa tatttgctag ctgatagtga ccttaggcga    1560
cttttgaacg cgcaataatg gtttctgacg tatgtgctta gctcattaaa ctccagaaac    1620
ccgcggctga gtggctcctt caacgttgcg gttctgtcag ttccaaacgt aaaacggctt    1680

```

V082.ST25.txt

gtccccgcgtc	atcggcgggg	gtcataacgt	gactccctta	attctcatgt	atgataattc	1740
gcggtacccg	gggatcctct	agagggcccc	acgtcgcgatg	cctgcaggtc	actggatttt	1800
ggtttttagga	attagaaatt	ttattgatag	aagtatttta	caaatacaaa	tacatactaa	1860
gggtttctta	tatgctcaac	acatgagcga	aaccctataa	gaacccta	tcccttatct	1920
gggaactact	cacacattat	tctggagaaa	aatagagaga	gatagatttg	tagagagaga	1980
ctggtgattt	ttgcggactc	tagcatggcc	gcgggatatac	accactttgt	acaagaaaagc	2040
tgaacgagaa	acgtaaaatg	atataaatat	caatatatta	aattagattt	tgcataaaaa	2100
acagactaca	taatactgta	aaacacaaca	tatccagtca	ctatggtcga	cctgcagact	2160
ggctgtgtat	aagggagcct	gacatttata	ttccccagaa	catcaggtta	atggcgtttt	2220
tgatgtcatt	ttcgcggtgg	ctgagatcag	ccacttcttc	cccgataacg	gagaccggca	2280
cactggccat	atcggtggtc	atcatgcgcc	agctttcatc	cccgatatgc	accaccgggt	2340
aaagtccacg	ggagacttta	tctgacagca	gacgtgcact	ggccaggggg	atcaccatcc	2400
gtcgcgccgg	cgtgtcaata	atatcactct	gtacatccac	aaacagacga	taacggctct	2460
ctcttttata	ggtgtaaacc	ttaaactgca	tttcaccagt	cctgttctc	gtcagcaaaa	2520
gagccgttca	tttcaataaa	ccgggcgacc	tcagccatcc	cttctgatt	ttccgctttc	2580
cagcgttcgg	cacgcagacg	acgggcttca	ttctgcatgg	ttgtgcttac	cagaccggag	2640
atattgacat	catatatgcc	ttgagcaact	gatagctgtc	gctgtcaact	gtcactgtaa	2700
tacgctgctt	catagcacac	ctctttttga	catacttcgg	gtatacatat	cagtatatat	2760
tottataaccg	caaaaatcag	cgcgcaaata	cgcatactgt	tatctggctt	ttagtaagcc	2820
ggatccacgc	gtttacgccc	cgccctgcc	ctcatcgcag	tactgttgta	attcattaag	2880
cattctgccc	acatggaagc	catcacagac	ggcatgatga	acctgaatcg	ccagcggcat	2940
cagcaccttg	tcgccttgcg	tataatattt	gcccattggtg	aaaacggggg	cgaagaagtt	3000
gtccatattg	gccacgttta	aatcaaaact	ggtgaaactc	accagggat	tggctgagac	3060
gaaaaacata	ttctcaataa	accctttagg	gaaataggcc	aggttttcac	cgtaacacgc	3120
cacatcttgc	gaatatatgt	gtagaaactg	ccggaaatcg	tcgtggtatt	cactccagag	3180
cgatgaaaac	gtttcagttt	gctcatggaa	aacggtgtaa	caagggtgaa	cactatccca	3240
tatcaccagc	tcaccgtctt	tcattgccat	acggaattcc	ggatgagcat	tcacaggcg	3300
ggcaagaatg	tgaataaagg	ccggataaaa	cttgtgctta	ttttcttta	cggctcttaa	3360
aaaggccgta	atatccagct	gaacggctctg	gttataggta	cattgagcaa	ctgactgaaa	3420
tgccctcaaaa	tgttctttac	gatgccattg	ggatatatca	acggtgggat	atccagtgat	3480
ttttttctcc	attttagctt	ccttagctcc	tgaaaatctc	gccggatcct	aactcaaaat	3540
ccacacatta	tacgagccgg	aagcataaag	tgtaaagcct	ggggtgccta	atgcggccgc	3600
catagtgact	ggatatgttg	tgttttacag	tattatgtag	tctgtttttt	atgcaaaatc	3660
taatttaata	tattgatatt	tatatcattt	tacgtttctc	gttcagcttt	tttgtacaaa	3720

V082.ST25.txt

cttgtgatat cactagtgcg gccgcctgca ggtcgcactag aatagtaaat tgtaatgttg 3780
tttgttgttt gttttgttgt ggtaattggt gtaaaaatac ggatcgtcct gcagtcctct 3840
ccaaatgaaa tgaacttcct tatatagagg aagggtcttg cgaaggatag tgggattgtg 3900
cgtcatccct tacgtcagtg gagatcac atcaatccac ttgctttgaa gacgtggttg 3960
gaacgtcttc tttttccacg atgctcctcg tgggtggggg tccatctttg ggaccactgt 4020
cggcagaggc atcttgaacg atagccttc ctttatcgca atgatggcat ttgtagggtc 4080
caccttcctt ttctactgtc cttttgatga agtgacagat agctgggcaa tggaatccga 4140
ggaggtttcc cgatattacc ctttgttgaa aagtctcaat agccctttgg tcttctgaga 4200
ctgtatcttt gatattcttg gagtagacga gagtgcctg ctccaccatg ttgacgaaga 4260
ttttcttctt gtcattgagt cgtaaaagac tctgtatgaa ctgttcgcca gtcttcacgg 4320
cgagttctgt tagatcctcg atctgaattt ttgactccat ggcctttgat tcagtaggaa 4380
ctactttctt agagactcca atctctatta cttgccttgg tttatgaagc aagccttgaa 4440
tcgtccatac tggaaatagta cttctgatct tgagaaatat atctttctct gtgttcttga 4500
tgcagttagt cctgaatctt ttgactgcat ctttaacctt cttgggaagg tatttgatct 4560
cctggagatt attactcggg tagatcgtct tgatgagacc tgccgcgtag gcctctctaa 4620
ccatctgtgg gtcagcattc tttctgaaat tgaagaggct aatcttctca ttatcgggtg 4680
tgaacatggt atcgtcacct tctccgtcga actttcttcc tagatcgtag agatagagaa 4740
agtcgtccat ggtgatctcc ggggcaaagg anatctcgac catatgggag agctcaagct 4800
tgcatgcctg caggtcactg gatthtgggt ttaggaatta gaaatthtat tgatagaagt 4860
atthtcaaaa taaaaataca tactaagggt ttcttatatg ctcaacacat gagcgaacc 4920
ctataagaac cctaattccc ttatgtggga actactcaca cattattctg gagaaaaata 4980
gagagagata gatthttaga gagagactgg tgatthtgc ggactctaga actagtggat 5040
ccccgggct gcagccgggc ggcgcttaca gctcgtcctt cttgtacagc tcgtccatgc 5100
cgagagtgat cccggcggcg gtcacgaact ccagcaggac catgtgatcg cgcttctcgt 5160
tggggtcttt gctcagggcg gactgggtgc tcaggtagtg gttgtcgggc agcagcacgg 5220
ggcgtcgcg gatgggggtg ttctgctggt agtggtcggc gagctgcacg ctgccgtcct 5280
cgatgttggt gcggatcttg aagtccacct tgatgccgtt cttctgcttg tcggccatga 5340
tatagacgtt gtggctgttg tagttgtact ccagcttggt ccccaggatg ttgccgtcct 5400
ccttgaagtc gatgcccttc agctcgatgc ggttcaccag ggtgtcggcc tcgaacttca 5460
cctcggcgcg ggtctttagt ttgccgtcgt ccttgaagaa gatgggtgcgc tcctggacgt 5520
agccttcggg catggcggac ttgaagaagt cgtgctgctt catgtggtcg gggtagcggc 5580
tgaagcactg cacgccgtag gtcaggggtg tcacgagggt gggccagggc acgggcagct 5640
tgccggtggt gcagatgaac ttcagggta gcttgccgta ggtggcatcg ccctcgcct 5700
cgccggacac gctgaacttg tggccgttta cgtcgcctgc cagctcgacc aggatgggca 5760

V082.ST25.txt

ccaccccggt	gaacagctcc	tcgcccttgc	tcaccatgtc	ggccgaggat	aatgatagga	5820
gaagtgaaaa	gatgaaaaag	agaaaaagat	tagtcttcac	catggctatc	gttcgtaa	5880
ggtgaaaatt	ttcagaaaat	agcttttgc	ttaaaagaaa	tgatttaa	tgctgcaata	5940
gaagtagaat	gottgattgc	ttgagattcg	tttgtttgc	atatgttg	ttgagaattc	6000
gagctcggta	cccggggatc	ctctagcgaa	tttctctgc	tcaaattg	gaggttagcg	6060
gatttgtaaa	cgcgtttata	tgggctgctt	ggagggtact	tttgattaa	ttttttctg	6120
ccagcgcatt	ctgacgcggc	accgcttgg	aaagtgcgct	gtgggtccgc	gttttctaca	6180
ataatgtgcc	gatccggtca	gaaagtatat	ggatgagttg	tgccagcctc	accaacgtgc	6240
tgcaggccca	tcatgactac	ttcaatgtta	atgggggtaa	tgaataaata	ggcgaaattg	6300
ggttcacggt	gggcccagg	aatataatat	tgccgcagag	gtagtcggat	gccaaggccc	6360
gcaactaata	gttcacgaac	aaattcctag	agagtcgacc	tgccagcatc	aagctaacct	6420
gcaggcatgc	aagcttagct	tgagcttgg	tcagattgtc	gtttcccgc	ttcagtttaa	6480
actatcagtg	tttgacagga	tatattggcg	ggtaaacct	agagaaaaga	gcgtttatta	6540
gaataacgga	tatttaaaag	ggcgtgaaaa	ggtttatccg	ttcgtccatt	tgtatgtgca	6600
tgccaaccac	agggttcccc	tcgggatcaa	agtactttga	tccaaccct	ccgctgctat	6660
agtgcagtcg	gcttctgacg	ttcagtgacg	ccgtcttctg	aaaacgacat	gtcgcacaag	6720
tcctaagtta	cgcgacaggc	tgccgcctg	cccttttct	ggcgtttct	tgtcgcgtgt	6780
tttagtcgca	taaagtagaa	tacttgcgac	tagaaccgga	gacattacgc	catgaacaag	6840
agcgcgcg	ctggcctgct	gggctatgcc	cgcgtcagca	ccgacgacca	ggacttgacc	6900
aaccaacggg	ccgaactgca	cgcgggccggc	tgcaccaagc	tgttttccga	gaagatcacc	6960
ggcaccagge	gcgaccgccc	ggagctggcc	aggatgcttg	accacctacg	ccctggcgac	7020
gttgtgacag	tgaccaggct	agaccgcctg	gcccgcagca	cccgcgacct	actggacatt	7080
gccgagcgca	tccaggaggc	cggcgcgggc	ctgcgtagcc	tggcagagcc	gtgggcccgc	7140
accaccacgc	cggccggccg	catggtggtg	accgtgttcg	ccggcattgc	cgagttcgag	7200
cgttccctaa	tcatcgaccg	caccgggagc	gggcgcgagg	ccgccaaggc	ccgaggcg	7260
aagtttgcc	cccgcctac	cctcaccg	gcacagatcg	cgcacgccc	cgagctgatc	7320
gaccaggaag	gccgcaccgt	gaaagaggcg	gctgcactgc	ttggcgtgca	tcgctcgacc	7380
ctgtaccg	cacttgagcg	cagcgaggaa	gtgacgcca	ccgaggccag	gcggcgcggt	7440
gccttcg	aggacgcatt	gaccgaggcc	gacgccctgg	cggccgcca	gaatgaacgc	7500
caagaggaac	aagcatgaaa	ccgcaccagg	acggccagga	cgaaccg	ttcattaccg	7560
aagagatcga	ggcggagatg	atcgcggccg	ggtacgtg	cgagccgccc	gcgcacgtct	7620
caaccgtg	gctgcatgaa	atcctggccg	gttgtctga	tgccaagctg	gcgccctggc	7680
cggccagctt	ggccgctgaa	gaaaccgagc	gccgccgtct	aaaaggtga	tgtgtatttg	7740
agtaaaacag	cttgcgctcat	gcggtcgctg	cgtatatgat	gcgatgagta	aataa	7800

V082.ST25.txt

tacgcaaggg	gaacgcatga	aggttatcgc	tgtacttaac	cagaaaggcg	ggtcaggcaa	7860
gacgaccatc	gcaacccatc	tagcccgcgc	cctgcaactc	gccggggccg	atgttctgtt	7920
agtcgattcc	gatccccagg	gcagtgcccg	cgattgggcg	gccgtgocgg	aagatcaacc	7980
gctaaccggt	gtcggcatcg	accgcccgcg	gattgaccgc	gacgtgaagg	ccatcggccc	8040
gcgcgacttc	gtagtgatcg	acggagcgcc	ccaggcggcg	gacttggctg	tgtccgcgat	8100
caaggcagcc	gacttcgtgc	tgattccggt	gcagccaagc	ccttacgaca	tatggggccac	8160
cgccgacctg	gtggagctgg	ttaagcagcg	cattgaggtc	acggatggaa	ggctacaagc	8220
ggcctttgtc	gtgtcgcggg	cgatcaaagg	cacgcgcatc	ggcggtgagg	ttgccgaggc	8280
gctggccggg	tacgagctgc	ccattcttga	gtcccgtatc	acgcagcgcg	tgagctaccc	8340
aggcactgcc	gccgccggca	caaccgttct	tgaatcagaa	cccgagggcg	acgctgcccg	8400
cgaggtccag	gcgctggccg	ctgaaattaa	atcaaaactc	atttgagtta	atgaggtaaa	8460
gagaaaatga	gcaaaagcac	aaacacgcta	agtgccggcc	gtccgagcgc	acgcagcagc	8520
aaggctgcaa	cgttggccag	cctggcagac	acgccagcca	tgaagcgggt	caactttcag	8580
ttgccggcgg	aggatcacac	caagctgaag	atgtacgcgg	tacgccaagg	caagaccatt	8640
accgagctgc	tatctgaata	catcgcgcag	ctaccagagt	aatgagcaa	atgaataaat	8700
gagtagatga	attttagcgg	ctaaaggagg	cggcatggaa	aatcaagaac	aaccaggcac	8760
cgacgccgtg	gaatgcccc	tgtgtggagg	aacgggcggg	tggccaggcg	taagcggctg	8820
ggttgtctgc	cggccctgca	atggcactgg	aacccccaa	cccgaggaat	cggcgtgacg	8880
gtcgcaaaacc	atccggcccc	gtacaaatcg	gcgcggcgct	gggtgatgac	ctggtggaga	8940
agttgaaggc	cgcgcaggcc	gccagcggc	aacgcatcga	ggcagaagca	cgccccgggtg	9000
aatcgtggca	agcggccgct	gatcgaatcc	gcaaagaatc	ccggcaaccg	ccggcagccg	9060
gtgcgccgtc	gattaggaag	ccgcccagg	gcgacgagca	accagatttt	ttcgttccga	9120
tgctctatga	cgtgggcacc	cgcatagtc	gcagcatcat	ggacgtggcc	gttttccgtc	9180
tgtcgaagcg	tgaccgacga	gctggcgagg	tgatccgcta	cgagcttcca	gacgggcacg	9240
tagaggtttc	cgcagggccg	gccggcatgg	ccagtgtgtg	ggattacgac	ctggtactga	9300
tggcggtttc	ccatctaacc	gaatccatga	accgataccg	ggaaggggag	ggagacaagc	9360
ccggccgcgt	gttccgtcca	cacgttgccg	acgtactcaa	gttctgccgg	cgagccgatg	9420
gcggaaagca	gaaagacgac	ctggtagaaa	cctgcattcg	gttaaaccacc	acgcacgttg	9480
ccatgcagcg	tacgaagaag	gccaaagacg	gccgcctggg	gacggtatcc	gagggtgaag	9540
ccttgattag	ccgctacaag	atcgtaaaga	gcgaaaccgg	gcggccggag	tacatcgaga	9600
tcgagctagc	tgattggatg	taccgcgaga	tcacagaagg	caagaaccgg	gacgtgctga	9660
cggttcacc	cgattacttt	ttgatcgatc	ccggcatcgg	ccgttttctc	taccgcctgg	9720
cacgccgcgc	cgcaggcaag	gcagaagcca	gatggttgtt	caagacgatc	tacgaacgca	9780
gtggcagcgc	cggagagttc	aagaagtctt	gtttcaccgt	gcgcaagctg	atcgggtcaa	9840

V082.ST25.txt

atgacctgcc ggagtacgat ttgaaggagg aggcggggcaggctggccccg atcctagtca 9900
tgcgctaccg caacctgatc gagggcgaag catccgccgg ttctaatgt acggagcaga 9960
tgctagggca aattgcccta gcaggggaaa aaggtcgaaa aggtctcttt cctgtggata 10020
gcacgtacat tgggaaccca aagccgtaca ttgggaaccg gaaccocgtac attgggaacc 10080
caaagccgta cattgggaac cggtcacaca tgtaagtac tgatataaaa gagaaaaaag 10140
gcgatTTTTc cgcctaaaac tctttaaacc ttattaaaac tctttaaacc cgcctggcct 10200
gtgcataact gtctggccag cgcacagccg aagagctgca aaaagcgcct acccttcggt 10260
cgctgcgctc cctacgcccc gccgcttcgc gtcggcctat cgcggccgct ggccgctcaa 10320
aatggctgg cctacggcca ggcaatctac cagggcgcgg acaagccgcg cgcctcggccac 10380
tcgaccgccc gcgccacat caaggcacc tgccctcgcg gtttcggtga tgacggtgaa 10440
aacctctgac acatgcagct cccggagacg gtcacagctt gtctgtaagc ggatgccggg 10500
agcagacaag cccgtcaggc cgcgtcagcg ggtgttgccg ggtgtcgggg cgcagccatg 10560
accagtcac gtacgcatag cggagtgtat actggcttaa ctatgcggca tcagagcaga 10620
ttgtactgag agtgcacat atgcggtgtg aaataccgca cagatgcgta aggagaaaat 10680
accgcatcag gcgctcttcc gcttctcgc tcaactgactc gctgcgctcg gtcgcttcggc 10740
tgcggcgagc ggtatcagct cactcaaagg cggtaatac gttatccaca gaatcagggg 10800
ataacgcagg aaagaacatg tgagcaaaag gccagcaaaa ggccaggaac cgtaaaaagg 10860
ccgctgtgct ggcgtTTTTc catagctcc gccccctga cgagcatcac aaaaatcgac 10920
gctcaagtca gaggtggcga aaccgcacag gactataaag ataccaggcg tttccccctg 10980
gaagctccct cgtgcgctct cctgttccga cctgcccgt taccggatac ctgtccgct 11040
ttctccctc gggaaagcgtg gcgctttctc atagctcacg ctgtaggtat ctcaagtccg 11100
tgtaggtcgt tcgctccaag ctgggctgtg tgcacgaacc cccgcttcag cccgaccgct 11160
gcgccttacc cggtaactat cgtcttgagt ccaaccgggt aagacacgac ttatcgccac 11220
tggcagcagc cactggtaac aggattagca gagcagagta tgtaggcgggt gctacagagt 11280
tcttgaagtg gtggcctaac tacggctaca ctagaaggac agtatttgggt atctgcgctc 11340
tgctgaagcc agttacctc ggaaaaagag ttggtagctc ttgatccggc aaacaaacca 11400
ccgctggtag cggtggtttt tttgtttgca agcagcagat tacgocgaga aaaaaaggat 11460
ctcaagaaga tcctttgatc ttttctacgg ggtctgacgc tcagtggaac gaaaactcac 11520
gttaagggat tttggtcatg catgatata ctcccaattt gtgtagggct tattatgcac 11580
gcttaaaaaat aataaaaagca gacttgacct gatagtttgg ctgtgagcaa ttatgtgctt 11640
agtgcaccta atcgcttgag ttaacgccgg cgaagcggcg tcggcttgaa cgaatttcta 11700
gctagacatt atttgccgac taccttgggt atctcgcctt tcacgtagtg gacaaattct 11760
tccaactgat ctgcgcgca ggccaagcga tcttcttctt gtccaagata agcctgtcta 11820
gcttcaagta tgacgggctg atactgggcc ggcagggcgt ccattgcca gtcggcagcg 11880

V082.ST25.txt

```

acatccttcg gcgcgatttt gccggttact gcgctgtacc aaatgcggga caacgtaagc 11940
actacatttc gctcatcgcc agcccagtcg ggcggcgagt tccatagcgt taaggtttca 12000
tttagcgctt caaatagatc ctgttcagga accggatcaa agagttcctc cgccgctgga 12060
cctaccaagg caacgctatg ttctcttget tttgtcagca agatagccag atcaatgtcg 12120
atcgtggctg gctcgaagat acctgcaaga atgtcattgc gctgccattc tccaaattgc 12180
agttcgcgct tagctggata acgccacgga atgatgtcgt cgtgcacaac aatggtgact 12240
tctacagcgc ggagaatctc gctctctcca ggggaagccg aagtttccaa aaggctcgttg 12300
atcaaagctc gccgcgttgt ttcatacagc cttacgggtca ccgtaaccag caaatcaata 12360
tcaactgtgtg gcttcaggcc gccatccact gcggagccgt acaaattgtac ggccagcaac 12420
gtcggttcga gatggcgctc gatgacgcca actacctctg atagttgagt cgatacttcg 12480
gcgatcaccg cttcccccat gatgtttaac tttgttttag ggcgactgcc ctgctgcgta 12540
acatcgttgc tgctccataa catcaaacat cgaccacgga cgtaacgcgc ttgctgcttg 12600
gatgcccagag gcatagactg taccclaaaa aacatgtca taacaagaag ccatgaaaac 12660
cgccactgcg ccggttaccac cgctgcgctc ggtcaagggt ctggaccagt tgcgtgacgg 12720
cagttacgct acttgcatca cagcttacga accgaacgag gcttatgtcc actgggttcg 12780
tgcccgaat 12789

```

```

<210> 10
<211> 20
<212> DNA
<213> Artificial Sequence

```

```

<220>
<223> degenerate primer ALGG39

```

```

<220>
<221> misc_feature
<222> (3)..(3)
<223> Inosine

```

```

<220>
<221> misc_feature
<222> (9)..(9)
<223> Inosine

```

```

<220>
<221> misc_feature
<222> (11)..(11)
<223> Inosine

```

```

<220>
<221> misc_feature
<222> (15)..(15)
<223> g or a

```

```

<220>
<221> misc_feature
<222> (18)..(18)

```

V082.ST25.txt

<223> any base

<400> 10
ccargykcag gaaaracnac 20

<210> 11
<211> 20
<212> DNA
<213> Artificial Sequence

<220>
<223> degenerate primer ALGG40

<220>
<221> misc_feature
<222> (3)..(3)
<223> Inosine

<220>
<221> misc_feature
<222> (15)..(15)
<223> any base

<220>
<221> misc_feature
<222> (18)..(18)
<223> any base

<400> 11
acackyttyt tytgnccncc 20

<210> 12
<211> 8
<212> DNA
<213> Artificial Sequence

<220>
<223> degenerate primer ALGG41

<220>
<221> misc_feature
<222> (6)..(6)
<223> any base

<220>
<221> misc_feature
<222> (5)..(5)
<223> g or a

<220>
<221> misc_feature
<222> (3)..(3)
<223> any base

<400> 12
tcnarncc 8

<210> 13

V082.ST25.txt

<211> 23
<212> DNA
<213> Artificial Sequence

<220>
<223> degenerate primer ALGG42

<220>
<221> misc_feature
<222> (3)..(3)
<223> Inosine

<220>
<221> misc_feature
<222> (6)..(6)
<223> Inosine

<220>
<221> misc_feature
<222> (9)..(9)
<223> Inosine

<220>
<221> misc_feature
<222> (12)..(12)
<223> Inosine

<220>
<221> misc_feature
<222> (15)..(15)
<223> any base

<220>
<221> misc_feature
<222> (18)..(18)
<223> any base

<400> 13
ggagtaytaa cagcnytnat ggg

23

<210> 14
<211> 23
<212> DNA
<213> Artificial Sequence

<220>
<223> degenerate primer ALGG43

<220>
<221> misc_feature
<222> (3)..(3)
<223> any base

<220>
<221> misc_feature
<222> (18)..(18)
<223> any base

<220>

V082.ST25.txt

<221> misc_feature
<222> (5)..(5)
<223> g or a

<220>
<221> misc_feature
<222> (21)..(21)
<223> g or a

<220>
<221> misc_feature
<222> (12)..(12)
<223> Inosine

<220>
<221> misc_feature
<222> (15)..(15)
<223> Inosine

<400> 14
tcnarcattcc aagtagcngg rtt

23

<210> 15
<211> 8
<212> DNA
<213> Artificial Sequence

<220>
<223> degenerate primer ALGG44

<220>
<221> misc_feature
<222> (6)..(6)
<223> g or a

<400> 15
ckccarta

8